



ANNUAL REPORT 2017-2018

Consortium for Families & Health Research (C-FAHR)

Email: C-FAHR-info@utah.edu

Website: <https://cfahr.utah.edu/>



TABLE OF CONTENTS

Background	3
The Cluster Hire	3
The Consortium	5
Members	6
Activities & Accomplishments, 2017-2018	7
TEP Hires	7
Member Events	7
Statistical Consultation	10
Research Fund	10
Interdisciplinary Training	12
Shared Resources for Data Analysis	15
Future Goals	16
Appendices	17
Appendix: Executive Committee	18
Appendix: C-FAHR Affiliated Members	19
Appendix: Annual Report of Activities from TEP Hires	23
Appendix: Accomplishments of all C-FAHR Awards, 2015-2018	31
Appendix: C-FAHR Fellows Program	42

BACKGROUND

The Consortium for Families and Health Research (C-FAHR) was formed in Spring 2014 when a core group of interdisciplinary faculty at the University of Utah received a competitive grant to develop a cluster hire that builds on the existing strengths of current University of Utah faculty. C-FAHR expands the potential for interdisciplinary collaboration among scholars conducting cutting-edge research related to health and families across the lifespan. Cindy Berg, Professor of Psychology, assembled and led the development of this initial proposal. Funding from the “transformative excellence program” (TEP) of the University of Utah afforded the group to hire 4 new faculty members, and to establish an interdisciplinary research consortium to support the research efforts of the new hires and the current faculty who are studying *families and health*.

The Cluster Hire

The first two years of C-FAHR were focused on the faculty search activities, when we conducted open faculty searches for two solid years. Dr. Kaphingst was the first hire and began a faculty position in 2015; the other three faculty members began in Fall 2016.



KIM KAPHINGST, PhD

Professor of Communication

Dr. Kimberly Kaphingst is a health communication researcher. Her research interests are in health literacy, cancer communication, family history, and the communication of genetic and genomic information. She led a series of intramural studies at the National Human Genome Research Institute (NHGRI) that examined predictors of individuals' understanding of and responses to genetic information across various disease outcomes. She was a Co-Investigator on the study team for the intramural Multiplex Initiative at NHGRI, a study designed to examine uptake of multiplex genetic

susceptibility testing among a population-based sample of healthy adults ages 25-40. Dr. Kaphingst led the working group that developed the Multiplex genetic susceptibility test results feedback strategy and examined participants' use of the study website and how this affected their decision making for uptake of the Multiplex test. She also led an analysis of participants' recall and comprehension, affective responses, and information seeking and health behaviors following receipt of the test results feedback. Dr. Kaphingst was the Principal Investigator on a recently completed study (R01 CA168608) to examine preferences for return of genome sequencing results among young breast cancer patients. She also co-led a supplemental project to the Program for the Elimination of Cancer Disparities grant (3U54CA153460) at Washington University, which examined preferences for models of consent for secondary research uses of biospecimens among a diverse sample of women. She previously led a qualitative investigation of African American women's reactions to and use of two family history tools. In her current work, Dr. Kaphingst is investigating understanding of shared familial risk and family communication among Caucasian, Latino, and Pacific Islander families. *Dr. Kaphingst joined the University of Utah faculty in 2015.*



BRUCE ELLIS, PhD.

Professor of Psychology

As an overarching goal of my career, I seek to leverage knowledge from both evolutionary biology and developmental science to address core issues in developmental psychopathology, especially in relation to child and adolescent health. This work employs life history theory to model stress-health relations over the life course. A major emphasis of my research has been the development of Biological Sensitivity to Context theory and its recent extension the Adaptive Calibration Model, which focus on how our biobehavioral systems respond to specific features of family environments and the larger ecological context. My empirical work examines the impact of fathers, family relationships, and socioecological conditions on children's biological stress responses, timing of pubertal development, risky adolescent behavior and cognition, and related health outcomes. In addition to this basic research, I am interested in real-world applications in the form of theoretically-based interventions.



PASCAL DEBOECK, PhD

Associate Professor of Psychology

Trained as a quantitative psychologist, I work to develop, improve, study and apply statistics to social science and medical data. My interests are focused on the development and application of methods for the analysis of intensive, intraindividual time series. In particular I focus on the development and application of derivatives, differential equation modeling, and dynamical systems concepts to time series that have characteristics common to behavioral and some physiological measures such as relatively low sampling rates, large amounts of measurement and/or dynamic error, and unequally spaced or missing observations. In analyzing such data, I often focus on questions related to the role of variability and less-stable change (the "error" in many statistical models). These methods have the potential to inform theories that address how, when and why people change over time. I have worked with

a range of applied topics including: resiliency and affect in older adults, health and depression as long-term outcomes of daily stress processing, marital quality and child well-being, sustained attention while driving, adult attachment, the coupling of maternal depression with child behavior, modeling of proteins associated with Alzheimer's, mood change in patients with rapid cycling bipolar disorder, and the motion of dancing individuals and dyads.



DANIEL ADKINS, PhD

Assistant Professor of Sociology

Dr. Daniel E Adkins was awarded his PhD in Sociology from the University of North Carolina, Chapel Hill. He has since been supported by various NIH grants, including an NIMH K01 Career Development Award providing him with five years of post-doctoral training in statistical genomics and bioinformatics at the VCU Center for Biomarker Research and Precision Medicine. His research, broadly quantitative and interdisciplinary, integrates social inequality perspectives on stress with genomic big-data to map how social disadvantage becomes epigenetically encoded, thus influencing downstream gene expression, health, and behavior. He has published over 40 peer reviewed articles in high impact sociology, psychiatry and genetics journals.

The Consortium

The consortium consists of the four TEP hires along with over 120 scholars that share a common interest in understanding how the family system can be utilized to improve the health and health care of individuals across the life span (children, adolescents, adults of all ages). Researchers are developing state-of-the-art theories, research methods, and interventions to inform how families can facilitate health promoting behaviors and how the family manages a variety of chronic illnesses.

The research of C-FAHR members has a common goal of identifying the ways in which the family system can operate effectively as a vehicle for promoting health and for managing chronic illnesses across time and across developmental life stages. Currently, consortium members are conducting research related to five broad research topics, and are coming together around these topics to develop innovative and interdisciplinary training that has the potential to transform the role of the family in health policy and health care encounters.



Early-Life Familial Contexts & Health



Families Managing Chronic Conditions



Family History and Shared Risk/Resilience



Statistical Methods to Study Families & Health
(dynamical systems, epigenetics, longitudinal change)



Family-Centered Approaches to
Health Care Practice & Policy

Interdisciplinary Training & Education

MEMBERS

C-FAHR brings together over 120 researchers across the University of Utah who desire to collaborate on research projects concerning families and health across the lifespan.

Members may be tenure-line faculty, clinical researchers, career-line faculty, and graduate students whose research interests align with C-FAHR's purpose and scope. The consortium also connects scholars with clinicians from the Primary Children's Hospital, the Huntsman Cancer Institute, the Utah Population Database, the College of Health's Rehabilitation and Wellness Clinic for individuals with multiple chronic conditions, and the Child and Family Development Center in the Department of Family and Consumer Studies.

Interested scholars need to submit a biosketch for review by the C-FAHR executive committee. The executive committee is comprised of a representative from each of the major colleges affiliated with the Consortium. See Appendix 1 for members of the Executive Committee and Appendix 2 for the current member lists.

Benefits to Members

- ❖ Interact in an environment that will support and foster interdisciplinary research on families and health
- ❖ Eligibility for the Consortium-sponsored research grants and statistical consultation support
- ❖ Participation in Consortium-sponsored conferences and symposia

Expectations of Members

- ❖ Actively support and participate in Consortium-sponsored research seminars and an annual research symposium
- ❖ Engage in discussion regarding the creation of new, collaborative research programs

**As of summer 2018,
C-FAHR has more
than 120 members,
representing 20
departments and 8
colleges at the
University of Utah.**

ACTIVITIES & ACCOMPLISHMENTS

2017-2018 Annual Review

2017-2018 represents the fourth full year of C-FAHR. During this academic year, C-FAHR focused on a number of initiatives aimed at supporting C-FAHR members and their interdisciplinary research collaborations, as well as laying the foundation for interdisciplinary training programs.

TEP Hires

C-FAHR exists, in part, because of the original Transformative Excellence Program (TEP) funding, which allowed for the hiring of four new faculty members. These four faculty members have now finished 2 to 2.5 years at the University of Utah. Each has fully integrated and immersed themselves within the University of Utah and each plays an integral role in the interdisciplinary scope of C-FAHR. Refer to Appendix 3 for more detail on each of their 2017-2018 accomplishments.

Particularly noteworthy accomplishments include:

- ❖ Over 150 hours of statistical consultation provided to C-FAHR members
- ❖ New interdisciplinary courses offered including Health Literacy, Stress & Health, Analysis of Temporal Data, Research Practicum in Families & Health
- ❖ Formation of a new interdisciplinary research collaborative called “DASH” (developmental adaptation to stress and health), as well as connection to several established research teams across campus
- ❖ Numerous grant submissions and publications with University of Utah collaborators

Member Events

During the 2017-2018 academic year, C-FAHR hosted a series of events for members. Based on a member survey conducted in spring 2017 we planned events, approximately monthly, that allowed members to interact and get to know others across campus (as opposed to formal research talks). These included a fall symposium, two journal club discussions, and two sessions where researchers could learn about resources available

throughout campus to support their research. We moved our Spring poster session to 2018-2019 given scheduling conflicts with the Center on Aging's spring symposium.

2017-2018 Events	
September 28 430 to 730 Location: SMBB (Ustar) 2nd Floor	Fall Symposium 4:30 Welcome. 5:00 Research Mixer. All C-FAHR members are invited to share 3 slides in 3 minutes. 6:00 Member Mingling. 6:30 Mentoring Roundtables. A focus on student success and mentorship for trainees.
October 26 11 to 1230 Location: CoN 2300	Interdisciplinary Team Building & Collaboration <i>Informal discussion groups around funding priority areas. Lunch will be served.</i> Next C-FAHR Pilot Grant program will be announced at this session. Proposals will be due December 1.
November 30 11 to 1230 Location: M LIB 1705	Journal Club & Discussion <i>A discussion of important topics and issues relevant to "Families & Health" researchers.</i> Discussion Topic: Is stress good or bad? Reading: Bruce Ellis, J Bianchi, V. Griskevicius, E. Frankenhuis. 2017. Beyond Risk and Protective Factors: An Adaptation-Based Approach to Resilience. <i>Perspectives on Psychological Science</i> , 12 (4), 561-587. Click here for full text. Facilitator: Bruce Ellis
January 25 4 to 530 Location: HSEB 5100B	Resources for Researchers <i>What are "Community Engaged Studios" and the UHealth Data Science Services? Come hear about these resources that could help with recruitment of subjects, identification of hard-to-reach populations, creation of pilot data on your population/topic of interest, as well as services to help you access clinical data from the Enterprise Data Warehouse.</i>
February 13 11 to 1230 Location: M LIB 1705	Journal Club & Discussion <i>A discussion of important topics and issues relevant to "Families & Health" researchers.</i> Discussion Topic: Families are not independent units -- analytic considerations. Reading & Facilitator: TBA

Our Fall symposium was a highly successful event. It had an attendance of about 70-80 members. It included a series of "research mixers" where members were split into four different topical breakout groups (Communications & Health; Social Networks, Relationships, Support & Health; Environment & Health; Families as Focus of Intervention). A reception immediately followed for members to continue conversations about possible collaborative relationships and shared interests. The evening ended with informal "Mentoring Roundtables" where trainees (pre and postdoctoral members) and junior faculty could chat with senior faculty on topics such as how to build and maintain an interdisciplinary team, how to find grant funding, resources at the U to support research, preparing for the first academic

position, navigating multiple advisors in graduate school, balancing collaboration versus independence as a scholar, collaborations with medical and non-medical scholars, and issues related to first-time publication process.



Photos from Fall Symposium: September 28, 2018

For other 2017-2018 events, we had events both on main campus and the health sciences campus at different times, attracting different audiences at each event, suggesting that time and location do matter to our members who are working throughout many different parts of campus. Several members asked if we could record or stream the events, which will be possible next year with the new facilities in Gardner Commons.

<https://www.utah.edu/faculty/c-fahr/activities/index.php>

Statistical Consultation

C-FAHR provides (free) statistical consultation to all of its members. Consultation is provided by two of the TEP hires - Dr. Daniel Adkins and Dr. Pascal Deboeck. From July 2017 to June 2018, they provided 84 hours of statistical consultation to C-FAHR members on research papers and grant proposals to 10 C-FAHR faculty, 2 postdoctoral members, and 4 graduate student members - representing 13 different departments. About 36% of the consultation hours were to ongoing research projects, 55% to grant proposals, and 9% to specific papers.

In addition to these research-focused consultations, Dr. Adkins and Dr. Deboeck provided an additional 68 hours in support of a C-FAHR graduate-level “research practicum” seminar.

In total, Dr. Adkins provided 73.1 consulting hours and Dr. Deboeck provided 78.7 consulting hours, for a combined total of 151.8 hours (83.9 consulting, 67.9 course support). This represents a marked increase from the prior year. From September 9th 2016 to May 31st 2016 a total of 41.3 consulting hours were provided to C-FAHR members.

Research Fund

In 2016-2019, C-FAHR received initial seed funding from the SVP’s office to support the efforts of the consortium. Dr. Berg also received initial funds to support the development of C-FAHR as part of a retention offer in 2014. In 2017-2018, these funds were used primarily to seed pilot projects of interdisciplinary research teams. In the Spring of 2018, the Executive Committee received 16 proposals and awarded pilot grant funding to six interdisciplinary faculty teams (up to \$10,000) and travel/research awards to three graduate students (up to \$1,000). As shown on the next page, the topics and disciplines represented by the 2017-2018 awardees are varied, showing the breadth of research pursued by C-FAHR members.

2017-2018 C-FAHR Research Fund Awardees

Epigenetic and neurodevelopmental treatment targets for prenatal opioid exposure	<ul style="list-style-type: none"> • Elisabeth Conradt, S. Crowell, M. Smid, K. Buchi, C. Fung, J. Shakib, E. Garland • <i>Psychology, Obstetrics and Gynecology, Pediatrics, Social Work</i>
Me & My Wishes: Developing a Family Conversation Component to Enhance Communication about Care Preferences in LTC Settings	<ul style="list-style-type: none"> • Gail Towsley & Alex Terrill • <i>Nursing, Occupational Therapy</i>
Live Patient Discharge From Hospice: Implications For Families And Hospice Staff	<ul style="list-style-type: none"> • Mardi Clayton, K. Supiano, K. Dassel, G. Towsley, J. Eaton, M. Caserta, R. Utz, E. Jacob, L. Miller • <i>Nursing, Gerontology, Sociology</i>
Feasibility Assessment for Engaging Rural Providers in a Multi-Level Family-Centered HPV Intervention	<ul style="list-style-type: none"> • Deanna Kepka, A. Kirchoff, D. Wetter, L. Clark, D. Lai • <i>Nursing, Pediatrics, Population Health Sciences</i>
HerStories: Economic Context of Family Planning	<ul style="list-style-type: none"> • Claudia Geist & Jessica Sanders • <i>Sociology & OB/Gyn</i>
Piloting a web-based positive psychology intervention for couples coping with brain injury	<ul style="list-style-type: none"> • Alex Terrill, R. Alitzer, B. Cardell, L. Clark, J. Mackenzie • <i>Occupational Therapy, Population Health Sciences, Nursing, Physical Rehabilitation Medicine</i>

2017-2018 C-FAHR Student Research & Travel Awardees

Like Mother Like Daughter (or Son): Prenatal Exposure to Maternal Stress and Emotion Dysregulation as Predictors of Newborn Neurobehaviors	<ul style="list-style-type: none"> • Robert Vlisides-Henry • <i>Psychology</i>
Assessing Ultraviolet Radiation Exposure in Rural and Urban Utah Families	<ul style="list-style-type: none"> • Elizabeth Nagelhout • <i>Public Health</i>
Travel to Western States Communication Association, Annual Conference	<ul style="list-style-type: none"> • Ashley Elrick • <i>Communication</i>

Refer to Appendix 4 for a full listing of accomplishments associated with all C-FAHR awards, from 2015-2018. Overall, the investment in these interdisciplinary teams over the past three years has paid off in terms of establishing new collaborations that are and have already secured federal and foundation funding, as well as high-profile publications.

Interdisciplinary Training

In addition to the research grants, the C-FAHR Executive Committee made the decision in 2017-2018 to invest in two parallel efforts that lay the foundation for future training grants.

C-FAHR Fellows Program

A dozen doctoral students and postdoctoral fellows were selected to be among the first cohort of the C-FAHR Fellows program. Each fellow received a stipend of \$1,000 and participated in a year-long training program where they attended all C-FAHR events and participated in an intensive semester-long research practicum course (SBS 6220) in Spring 2018.



Photo: C-FAHR Fellows & Mentors, 2017-2018. Trainees represent Nursing, Human Development and Social Policy, Psychology, Sociology, Occupational Therapy, and Public Health

The course was the main component of the training. It was developed and led by C-FAHR Co-Directors, Cindy Berg & Becky Utz, along with C-FAHR statisticians, Daniel Adkins & Pascal Deboeck. A number of other C-FAHR members gave guest lectures throughout the term. The primary objective of the course was to give the trainees the tools to develop an

This course will encourage students to (a) analyze critically – and reflect deeply about – the theories and analyses used within and between disciplines studying “families and health”; (b) appreciate the value of diverse perspectives and collaborative approaches to “families & health” research; and (c) imagine and implement a novel research project that is born from an interdisciplinary collaboration.

interdisciplinary perspective to the quantitative study of “families and health” by engaging in a collaborative research project.

During the course, the fellows split into three separate research teams to complete a collaborative research project:

Team 1: Attachment relations between parent and child and their effect on the child’s diabetes management, led by mentor Cindy Berg and using data from her lab,

Team 2: The effect of chronic illness and disability on relationship quality among married middle age couples, led by mentor Becky Utz and using data from the publicly available MIDUS dataset, and

Team 3: Life-history analysis of early life familial stressors on adolescent sexual risk taking behaviors, led by mentor Daniel Adkins and using the AddHealth dataset.

By the end of summer 2018, 2 (or maybe all 3) of these papers will be submitted for publication consideration to peer-review journals. Refer to Appendix 5 for more information about the C-FAHR Fellows program, including the syllabus of the research practicum course.

Based on feedback from the Fellows, the program was a major success. The students benefited greatly from the variety of topics covered during guest lectures, and especially appreciated the hands-on research and practical professional development training that the Fellows program offered. The stipend was also a major motivator for the students, who do not have many opportunities for travel or research funds otherwise. Although the program was deemed a success, we will not repeat it in 2018-2019, given the resources required to provide stipends to the fellows and the need to rely on “donated” time of the faculty members who led the course. We hope to use this first cohort as a model to discuss in a proposal for a training grant that could help sustain such a program in the future.

Intensive Summer Courses in Statistics

In Fall 2017, a team of C-FAHR members - including Brian Baucom, Jonathan Butner, and Pascal Deboeck from Psychology, Daniel Adkins from Sociology, and Simon Brewer from Geography - applied to be a site for the ICPSR Summer Program in Quantitative Methods. (ICPSR = Interuniversity Consortium for Political and Social Research). These intensive workshops have been offered since 1963, primarily at the University of Michigan in Ann Arbor, MI. They provide scholars from many different disciplines rigorous, hands-on training in statistical techniques, research methodologies, and data analysis. The ICPSR Summer

Program is internationally recognized as a leader for training in research methodologies and statistical techniques used across the social, behavioral, and medical sciences.

The University of Utah team was selected to teach a series of intensive summer workshops related to the advanced quantitative analyses for families and health research. These workshops will be sponsored and advertised by the well-established and prestigious ICPSR summer program, but hosted in Salt Lake City on the campus of University of Utah. The courses will be taught by University of Utah faculty, all members of C-FAHR.

In May 2018, the first workshop on “dynamical systems analyses” was held in Salt Lake City. It was taught by Jonathan Butner and Brian Baucom in Psychology. It had 15 participants, with off-campus attendees coming from UC-San Francisco, NYU, UMBC, Boston University, Florida State, and Georgia Southern University. Next summer C-FAHR will offer 3-4 different workshops. These include, in addition to the dynamical systems workshop, a workshop on geographical information systems, epigenetic analyses, and novel methods for measuring longitudinal change. All workshops will be targeted specifically to researchers interested in studying families and/or health.



In Spring 2018, C-FAHR provided some financial support to the faculty leading the ICPSR effort, so they could prepare the curriculum and successfully launch the full set of workshops over the next year or two. We believe that both the C-FAHR Fellows program, as well as the establishment of the ICPSR Summer workshop series are important, if not essential, groundwork for future training grants related to C-FAHR.

These two graduate-level training opportunities implemented in 2018-2019 build upon and complement C-FAHR’s undergraduate training efforts. Beginning in 2015, C-FAHR members developed a Block U program in “Families & Health.” Block U is a yearlong learning community, where cohorts of first-year students take a series of 6 courses together that all related to the theme of “families & health” and satisfy their general education requirements. The goal is to teach students how to integrate across the diverse disciplines to gain a better understanding of the topic.

Shared Resources for Data Analysis

During 2017-2018, C-FAHR increased its capacity to support C-FAHR members by providing greater access to select data sources. Future resources will be available in partnership with NEXUS (iNEterdisciplinary Exchange for Utah Science).

Secure Data Center.

C-FAHR Executive Board member Ken Smith prepared an application to the National Science Foundation (NSF) for a secure data center, which received funding by NSF (award began 7/2/18). The Secure Data Center will be housed in the new Gardner Commons building. The Secure Data Center will provide C-FAHR members, as well as other scholars in the region, access to restricted governmental and administrative data sources.

AddHealth Contract

C-FAHR provided a small grant (<\$700) in the winter of 2018 to establish an agreement with the Carolina Population Center to purchase and gain access to a large longitudinal dataset called AddHealth or the National Longitudinal Study of Adolescent to Adult Health. C-FAHR Co-Director Rebecca Utz manages the IRB approval and all data security protocols associated with the AddHealth contract. Any C-FAHR member (student or faculty) can access waves I-V of AddHealth free of charge, once they sign a data security pledge and receive initial training on the data security protocols. Currently, there are 13 approved data users among C-FAHR members utilizing this resource.

FUTURE GOALS

2018 and Beyond

Building on the positive trajectory and many successes of the past four years, C-FAHR continues to explore ways to bring together and support scholars and clinicians at the University of Utah who are committed to the study of “families and health.” Our five-year future goal includes securing additional sources of financial support in the form of training grants, center grants, or program project grants. To this end, we have set the following goals for next year, 2018-2019:

Goals 2018-2019

Distribute up to \$60,000 in C-FAHR "research fund" awards in 2018-2019.

- ❖ up to 10 student awards @ \$1,000 each
- ❖ up to \$30,000 for faculty/team investment related to the development and submission of training, center, and/or program project grants @ \$10-15,000 per team
- ❖ up to \$20,000 in interdisciplinary seed grants @ \$10,000 each

Host monthly events for C-FAHR members to interact and learn from one another.

September - "State of C-FAHR" Member Retreat

October - Introducing NEXUS & Secure Data Center

November - Guest speaker/consultant

January - Poster Session & Reception

February - Working group meetings

March - Guest speaker/consultant (analyses)

Assemble teams to prepare and submit at least 1 training grant to NIH before July 2019: K07 & R24 are two of the most promising mechanisms we are planning

Invite speakers/consultants to work with the C-FAHR Executive Committee on the preparation and planning of training grants.

As we move forward, we are particularly attune to how C-FAHR will benefit from and partner with the increased research infrastructure that is being developed through the launch of NEXUS and the Research Development Office.

APPENDICES

C-FAHR Executive Committee, 2017-2018



Cynthia Berg, Co-Director
Department of Psychology



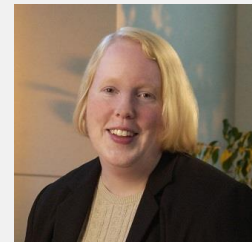
Rebecca Utz, Co-Director
Department of Sociology



Mike Caserta
Nursing & Gerontology



Bruce Ellis
Psychology



Kim Kaphingst
Communication



Kenneth Smith
Family & Consumer Studies



Joseph Stanford
Family & Prev Med



Alex Terrill
Occupat. Therapy



Ashley Elrick, Graduate Student Representative
Communication

C-FAHR Affiliated Members, 2017-2018

<u>Daniel Adkins</u> <i>Sociology</i>	<u>Djin Lai</u> <i>Nursing (Graduate Student)</i>
<u>Lisa Aspinwall</u> <i>Psychology (Professor and Chair), HCI</i>	<u>Paul LaStayo</u> <i>Physical Therapy</i>
<u>Carolynne Baron</u> <i>Psychology (Graduate Student)</i>	<u>Eunjin Lee</u> <i>Psychology (Postdoctoral Fellow)</i>
<u>Brian Baucom</u> <i>Psychology</i>	<u>Tae Kyoung Lee</u> <i>Communication</i>
<u>Katherine Baucom</u> <i>Psychology</i>	<u>Betty Lin</u> <i>Psychology (Postdoctoral Fellow)</i>
<u>Mary Beckerle</u> <i>Biology</i>	<u>Michael Magill</u> <i>Family and Preventive Medicine</i>
<u>Cindy Berg</u> <i>Psychology</i> <i>Dean of Social and Behavioral Science</i>	<u>Robin Marcus</u> <i>Physical Therapy,</i> <i>Interim Dean of College of Health</i>
<u>Mark Bergstrom</u> <i>Communication</i>	<u>Alexis May</u> <i>Psychology (Postdoctoral Fellow)</i>
<u>Tim Brusseau</u> <i>Exercise and Sports Science</i>	<u>Ty McKinney</u> <i>Psychology (Graduate Student)</i>
<u>Karen Buchi</u> <i>Division of General Pediatrics</i>	<u>Julie Metos</u> <i>Division of Nutrition</i>
<u>Jonathan Butner</u> <i>Psychology</i>	<u>Tom Meyer</u> <i>Independent Statistician</i>
<u>Sara Bybee</u> <i>Nursing (Graduate Student)</i>	<u>Jude Mikal</u> <i>Psychology</i>
<u>Kristine Campbell</u> <i>Child Protection and Family Health</i>	<u>Lyndsey Miller</u> <i>Nursing (Postdoctoral Fellow)</i>
<u>Heather Canary</u> <i>Communication</i>	<u>Shannon Moore</u> <i>Psychology (Graduate Student)</i>
<u>Zoe Caron</u> <i>Psychology (Graduate Student)</i>	<u>Shae Morgan</u> <i>Communication Sciences and Disorders</i> <i>(Graduate Student)</i>

<u>Daniel Carlson</u> <i>Family and Consumer Studies</i>	<u>Ascher Munion</u> <i>Psychology (Graduate Student)</i>
<u>Mike Caserta</u> <i>Nursing</i>	Elizabeth Nagelhout <i>Public Health (Graduate Student)</i>
Alla Chernenko <i>Sociology (Graduate Student)</i>	Mike Newman <i>Public Health (Graduate Student)</i>
<u>Ed Clark</u> <i>Pediatrics</i>	<u>Quynh Nguyen</u> <i>Health Promotion and Education</i>
<u>Lauren Clark</u> <i>Nursing</i>	Christie North <i>Consultant</i>
<u>Margaret Clayton</u> <i>Nursing</i>	<u>Brock O'Neil</u> <i>Urology</i>
<u>Elisabeth Conradt</u> <i>Psychology</i>	<u>Brendan Ostlund</u> <i>Psychology (Graduate Student)</i>
Alexander Crenshaw <i>Psychology (Graduate Student)</i>	<u>Rebecca Owen</u> <i>Sociology (Graduate Student)</i>
<u>Sheila Crowell</u> <i>Psychology</i>	<u>Nicholas Perry</u> <i>Psychology (Graduate Student)</i>
Rick Cruz <i>Psychology (Utah State University)</i>	<u>Pollie Price</u> <i>Occupational Therapy</i>
Kara Dassel <i>Nursing</i>	Tara Queen <i>Psychology</i>
<u>Pascal Deboeck</u> <i>Psychology</i>	<u>Lee Raby</u> <i>Psychology</i>
<u>Carlene Deits-Lebehn</u> <i>Psychology (Graduate Student)</i>	<u>Meagan Ramsey</u> <i>Psychology (Postdoctoral Fellow)</i>
<u>Lisa Diamond</u> <i>Psychology</i>	Maija Reblin <i>Nursing</i>
<u>Marissa Diener</u> <i>Family and Consumer Studies</i>	<u>Megan Reynolds</u> <i>Sociology</i>
<u>Lee Ellington</u> <i>Nursing</i>	<u>Sonia Salari</u> <i>Family and Consumer Studies</i>
<u>Bruce Ellis</u> <i>Psychology</i>	Jessica Sanders <i>Family and Preventive Medicine</i>

<u>Ashley Elrick</u> <i>Communication (Graduate Student)</i>	<u>Debra Scammon</u> <i>Marketing</i>
<u>Jessie Fan</u> <i>Family and Consumer Studies</i>	<u>Karen Schliep</u> <i>Family and Preventive Medicine</i>
<u>Katarina Friberg Felsted</u> <i>Nursing</i>	<u>Nila Shakiba</u> <i>Psychology (Graduate Student)</i>
<u>Sarah Ferguson</u> <i>Communication Sciences and Disorders</i>	<u>Stacy Shumway Manwaring</u> <i>Communication Sciences and Disorders</i>
<u>Katie Fortenberry</u> <i>Family and Preventive Medicine</i>	<u>Jim Sibthorp</u> <i>Parks, Recreation and Tourism</i>
<u>Julie Fritz</u> <i>Physical Therapy</i>	<u>MaryJane Simms</u> <i>Psychology (Graduate Student)</i>
<u>Claudia Geist</u> <i>Sociology</i>	<u>Joseph Stanford</u> <i>Family and Preventive Medicine</i>
<u>Bryan Gibson</u> <i>Epidemiology</i>	<u>Tim Smith</u> <i>Psychology</i>
Michael Green <i>Pediatrics</i>	<u>Ken Smith</u> <i>Family and Consumer Studies, Director of Utah Population Database, HCI</i>
<u>Alisyn Hansen</u> <i>Pharmacotherapy</i>	<u>Katherine Supiano</u> <i>Nursing</i>
<u>Heidi Hanson</u> <i>HCI Pedigree & Population Science</i>	<u>Masha Sukovic</u> <i>Communication</i>
<u>Sara Hart</u> <i>Nursing</i>	Jennifer Tabler <i>Sociology</i>
<u>Katherine Hastings</u> <i>Family and Preventive Medicine</i>	<u>Lisa Taylor-Swanson</u> <i>Nursing</i>
Ellie Hirshberg <i>Internal Medicine</i>	<u>Alexandra Terrill</u> <i>Occupational Therapy</i>
<u>Camilla Hodge</u> <i>Health, Kinesiology and Recreation</i>	<u>Gail Towsley</u> <i>Nursing</i>
<u>Jakob Jensen</u> <i>Communication</i>	<u>Bert Uchino</u> <i>Psychology</i>
<u>Robin Jensen</u> <i>Communication</i>	<u>Rebecca Utz</u> <i>Sociology</i>

Akiko Kamimura*Sociology***Robert Vlisides-Henry***Psychology (Graduate Student)***Kim Kaphingst***Communication***Norman Waitzman***Economics***Caitlin Kelly***Psychology (Graduate Student)***Andrea Wallace***Nursing***Robert Kent***Psychology (Graduate Student)***Neng Wan***Geography***Deanna Kepka***Nursing***Dennis Wei***Geography***Patricia Kerig***Psychology***Ming Wen***Sociology (Professor and Chair), HCI***Anne Kirby***Occupational Therapy***David Wetter***Population Health Sciences, HCI***Anne Kirchoff***Pediatrics, HCI***Cheryl Wright***Family and Consumer Studies***Leslie Knapp***Anthropology (Professor and Chair)***Scott Wright***Nursing***Kim Korinek***Sociology***Yelena Wu***Family and Preventive Medicine, HCI***Lori Kowaleski-Jones***Family and Consumer Studies
(Professor and Chair)***Jiayun Xu***Nursing (Postdoctoral Fellow)***Robert Kraemer***Communication Sciences and Disorders***Rumei Yang***Nursing (Graduate Student)***Melinda Krakow***Communication***Cathleen Zick***Family and Consumer Studies,
Associate Dean of Social and Behavioral
Science***Karol Kumpfer***Health Promotion and Education*

TEP Cluster Hire, Annual Reports

C-FAHR Annual Report
Kimberly Kaphingst
 June 15, 2018

I have had substantial research productivity in the last year. I submitted a R21 to NCI in October 2017 as Principal Investigator, and this will be resubmitted in November 2018. I was part of the leadership teams for two large interdisciplinary grant submissions: (1) as a Project Leader for a Program Project Grant focused on the multi-gene basis of cancer submitted in May 2017, with a planned resubmission in January 2019; and (2) as a Principal Investigator for a Cancer Moonshot U01 focused on implementation of genomic medicine submitted in January 2018, which received an impact score of 18 (funding decision pending). I also served as a Co-Investigator on R01 submissions in October 2017 and February 2018. I submitted two pilot grants to the HCI Cancer Control and Population Sciences program and Colon Disease-Oriented Team, both of which were funded. These pilot grants will provide data for additional 2019 grant submissions. The majority of these grants have focused on family history and/or family communication about cancer risks. In addition to grants, I had 12 peer-reviewed publications accepted and/or published as well as three book chapters published. I presented four peer-reviewed conference papers and was an author on eleven additional conference papers. In addition, I was an invited speaker for the keynote symposium on prevention and precision medicine at the American Society of Preventive Oncology annual meeting in March 2018.

In terms of teaching and service, I received a research leave in Fall 2018 and served as the lead instructor for COMM 5118/6118 (Health Literacy) in Spring 2018, receiving strong evaluations for this newly created course. I had a number of prominent professional roles, including serving as Chair of the American Public Health Association's Genomics Forum, member of the Presidential Taskforce on Genomics for the Society of Behavioral Medicine, and invited member of the National Human Genome Research Institute's working group on Genomic Literacy. I serve on the program committees for the American Public Health Association and International Conference on Communication in Healthcare. In addition, I serve on a number of university or department committees, including the C-FAHR Executive Committee, Department of Communication Graduate Committee, Genetic Counseling Shared Resource Advisory Board at the Huntsman Cancer Institute, and the Huntsman Cancer Institute's Population Science Trials Office Advisory Committee.

Finally, mentoring continues to be an important part of my role. I serve as the chair of the dissertation committee for two Department of Communication doctoral students: Ashley Elrick and Chelsea Ratcliff Bush. I also am a member of the doctoral committees for Robert Layne, Manu Pokharel, and Melissa Parks from the Department of Communication and Rosalie Waller (Department of Biomedical Informatics). I also served on the thesis committees for Jenna Peterson (Genetic Counseling), Laneta Fitisemanu (MPA), Meredith Vehar (MPA), and Nancy Rindlisbach (MS in Health Promotion and Education). I supervise one postdoctoral fellow at the University of Utah, Soo Jung Hong, and mentor another postdoctoral fellow at the National Human Genome Research Institute, Erin Turbitt. I also mentor three junior faculty members at the Huntsman Cancer Institute: Drs. Cindy Matsen, Sarah Colonna, and Lyen Huang.

Bruce Ellis: CFAHR related activities

RESEARCH GRANTS AND CONSULTING (current). *I have obtained multiple foundation grants since coming to the University of Utah, which have provided strong funding for the Hidden Talents project* (see: <https://hiddentalents.psych.utah.edu/>)

- 2018- Co-Principal Investigator (PI: Willem Frankenhuis). *Hidden Talents in Youth*.
 2021 James S. McDonnell Foundation. University of Utah subcontract: \$150,000. Dates: July 1, 2018—June 30, 2021.
- 2018- Principal Investigator. *Improving Educational Practice through Leveraging*
 2019 *Stress-Adapted Skills*. Sorenson Legacy Foundation. Amount: \$30,000. Dates: March 1, 2018—Feb. 28, 2019.
- 2017- Principal Investigator (Co-PIs: Daniel Adkins, Dan Carlson, Elizabeth Conradt,
 2019 Sheila Crowell, Lisa Diamond). *Recruitment of At-Risk Youth for a Series of Interdisciplinary Studies*. Consortium for Families & Health Research (C-FAHR) pilot grant, University of Utah. Amount: \$17,000. April 1, 2017—March 31, 2019
- 2016- Principal Investigator (Co-PI: Willem Frankenhuis). *Research Network on*
 2019 *Adaptations to Childhood Stress: A Strength-Based Approach to Enhancing Productivity and Health in the Context of Adversity*. Robert Wood Johnson Foundation, 73657. Amount: \$278,508. Dates: July 15, 2016 – June 14, 2019.
- 2016- Co-Investigator (PI: Norman Li). *A Life History Mismatch Perspective on Low*
 2018 *Fertility in Modern Society*. Ministry of Education Academic Research Fund (MOE AcRF) Tier 1, Singapore. Amount: SG\$143,655.20 (~ US\$105,609). Dates: Oct 1, 2016—Sept. 20, 2018.
- 2015- External advisor (PI: Renee Veenstra). *Anti-bullying programs 2.0: Tailored*
 2020 *interventions to minimize bullying*. Netherlands Organization for Scientific Research VICI grant. Sept.1, 2015—August 10, 2020. [This grant includes an RCT of 70 schools in the Netherlands to test the *Meaningful Roles* intervention (Ellis et al., 2015, *Journal of Research on Adolescence*)]

RESEARCH GRANTS AND CONSULTING (pending). *This grant was scored, but not in the fundable range. Revision and resubmission planned.*

- 2018- Multiple Principal Investigator (MPIs: Chris Fagundes, Lisa Diamond). *Adolescent*
 2013 *cardiovascular risk: Individual differences in biobehavioral sensitivity to stress-related inflammation*. R01 submitted to National Heart, Lung, and Blood Institute (National Institutes of Health). Amount: \$3,893,289.00. Dates: 09/01/2018—08/31/2023.

RESEARCH GRANTS AND CONSULTING (not funded).

- 2017- Principal investigator (Co-PIs: Lisa Diamond, Willem Frankenhuis), *Do Adversity Exposures Enhance Creativity and Empathic Accuracy?* Letter of Intent submitted to Templeton Foundation Pathways to Character program. Status: not funded.
- 2017- Principal investigator (Co-PIs: Lisa Diamond, Willem Frankenhuis), *Reducing Inequality through Leveraging Stress-Adapted Skills*. Letter of Intent submitted to William T. Grant Foundation. Status: not funded.
- 2017- Principal investigator (Co-PIs: Lisa Diamond, Willem Frankenhuis), *Improving Educational Practice through Leveraging Stress-Adapted Skills*. Letter of Intent submitted to the Spencer Foundation for the Lyle Spencer Research Award. Status: not funded.

SCHOLARLY BOOKS AND BOOK CHAPTERS:

**student co-author My students and I had a strong record of publications in the last year, both in terms of quantity and quality, as follows:*

- *Shakiba, N., Conradt, E., & **Ellis, B. J.** (submitted). The hypothalamic-pituitary-adrenal axis: Its functional role as a mediator and moderator of the relations between early-life experiences and problem behaviors. In E. P. Hayden, & K. Harkness (Eds.), *The Oxford handbook of stress and mental health*. New York: Oxford University Press.
- *Warren, S. W., *DelPriore, D. J., & **Ellis, B. J.** (in press). Early attachment experiences and romantic attachment. In T. K. Shackelford & V. A. Weekes-Shackelford (Eds.), *Encyclopedia of Evolutionary Psychological Science*. New York, NY: Springer Publishing.
- *Cabeza De Baca, T., & **Ellis, B. J.** (in press). Evolutionary perspectives on parenting. In V.A. Weekes-Shackelford & T.K. Shackelford (Eds.), *The Oxford handbook on evolutionary psychology and parenting*. New York: Oxford University Press.
- Ellis, B. J.** (in press). The evolutionary basis of risky adolescent behavior. In D.S. Wilson & S. C. Hayes (Eds.), *Evolution and contextual behavioral science: A reunification*. Oakland, CA: New Harbinger Publications/Context Press.
- Ellis, B. J.** (2018). Toward an adaptation-based approach to resilience. In J.G. Noll & I. Shalev (Eds.), *The biology of early life stress: Understanding child maltreatment and trauma* (pp. 31-43). New York, NY: Springer Publishing.
- Ellis, B. J.**, Del Giudice, M., & Shirtcliff, E. A. (2017). The Adaptive Calibration Model of stress responsivity: Concepts, findings, and implications for developmental psychopathology. In T. P. Beauchaine & S. P. Hinshaw (Eds.), *Child and adolescent psychopathology* (3rd Ed.) (pp. 237-276). New York: Wiley & Sons.

REFEREED JOURNAL ARTICLES:

**student co-author*

- *Shakiba, N., **Ellis, B. J.**, Bush, N. R., & Boyce, T. W. (under review). Biological Sensitivity to Context: A test of the hypothesized U-shaped relation between early adversity/support and stress responsivity. Submitted to *Development and Psychopathology*.
- *DelPriore, D.J., *Shakiba, N., *Schlomer, G.S., Hill, S.E., & **Ellis, B.J.** (under review). The effects of fathers on daughters' expectations for men. Submitted to *Developmental Psychology*.
- Troisi, A., Brüne, M., **Ellis, B.J.**, Nettle, D., Stein, D.J., & Nesse, R.M. (under review). What clinicians can learn from evolutionary psychiatry. Submitted to *British Journal of Psychiatry*.
- Ellis, B.J.**, & Del Giudice, M. (in press). Developmental adaptation to stress: An evolutionary perspective. *Annual Review of Psychology*.
- *Slagt, M., Dubas, J.S., van Aken, M.A.G., **Ellis, B.J.**, & Deković, M. (in press). Linking emotional reactivity 'for better and for worse' to differential susceptibility to parenting among kindergartners. *Development and Psychopathology*.
- Conradt, E., Adkins, D.E., Crowell, S.E., Raby, K.L., Diamond, L., & **Ellis, B.J.** (in press). Incorporating epigenetic mechanisms to advance fetal programming theories. *Development and Psychopathology*. Special Issue on "Developmental Origins of Psychopathology."
- *Slagt, M., Dubas, J.S., van Aken, M.A.G., **Ellis, B.J.**, & Deković, M. (2018). Sensory processing sensitivity as a marker of differential susceptibility to parenting. *Developmental Psychology*, 54, 543-558.
- *DelPriore, D.J., Proffitt Leyva, R., **Ellis, B.J.**, Hill, S.E. (2018). The effects of paternal disengagement on women's perceptions of male mating intent. *Journal of Personality and Social Psychology*, 114, 286-302.
- Frankenhuis W.E., & **Ellis, B.J.** (2017). Toward a balanced view of stress-adapted cognition. *Behavioral and Brain Sciences* commentary, 40, e325.

*DelPriore, D.J., *Schlomer, G.L., & **Ellis, B.J.** (2017). Impact of fathers on parental monitoring of daughters and their affiliation with sexually promiscuous peers: A genetically and environmentally controlled sibling study. *Developmental Psychology*, 53, 1330-1343.

Ellis, B.J., *Bianchi, J., Griskevicius, V., & Frankenhuys, W.E. (2017). Beyond risk and protective factors: An adaptation-based approach to resilience. *Perspectives on Psychological Science*, 12, 561–587.

*Cabeza De Baca, T., & **Ellis, B. J.** (2017). Early stress, parental motivation, and reproductive decision-making: Applications of life history theory to parental behavior. *Current Opinions in Psychology*, 15, 1-6.

*Slagt, M., Dubas, J. S., van Aken, M. A. G., **Ellis, B. J.**, & Deković, M. (2017). Children's differential susceptibility to parenting: An experimental test of 'for better and for worse'. *Journal of Experimental Child Psychology*, 154, 78-97.

Ellis, B.J., Oldehinkel, A.J., & Nederhof, E. (2017). The Adaptive Calibration Model of stress responsivity: An empirical test in the TRAILS study. *Development and Psychopathology*, 29, 1001-1021.

INVITED SCHOLARLY PRESENTATIONS:

+Indicates that the sponsoring organization paid travel costs.

+**Ellis, B.J.** (May 22, 2018). Developmental adaptation and differential susceptibility to stress: Implications for CVD interventions. Invited plenary address, National Heart, Lung, and Blood Institute Workshop on "Social Determinants of Health: Early Life Adversity as a Contributor to Disparities in Cardiovascular Diseases." Bethesda, MD.

+**Ellis, B.J.** (April 5, 2018). The role of paternal investment in regulating daughter's sexual development and behavior. Invited colloquium, Department of Anthropology, University of Utah, Salt Lake City.

Ellis, B.J. (Feb. 20, 2018). Early life risk and development. Invited lecture, Families & Health: An Interdisciplinary Research Practicum, University of Utah, Salt Lake City.

Ellis, B.J. (Nov. 30, 2017). Is stress good or bad?. Invited presentation, Consortium for Families and Health Research, University of Utah, Salt Lake City.

+**Ellis, B.J.** (Nov. 16, 2017). Adversity and resilience from evolutionary, family and ecological perspectives. Invited plenary address, National Cancer Institute-CASPHR Workshop on "Health Impacts of Adversity, Vulnerability and Resilience." Bethesda, MD.

+**Ellis, B.J.** (Nov. 1, 2017). Beyond risk and protective factors: An adaptation-based approach to resilience. Invited colloquium, Department of Child and Youth Studies, Brock University, St. Catharines, ON, Canada.

Ellis, B.J. (Feb. 7, 2017). Effects of fathers on puberty and sexual behavior in daughters. Interdisciplinary Seminar on Gender & Sexuality – Invited Speaker Series, University of Utah, Salt Lake City.

Ellis, B.J. (Jan. 31, 2017). Understanding the effects of family stress on puberty and risky adolescent behavior: An evolutionary perspective on development and resilience. Invited lecture, Health, Society and Policy (HSP) Capstone course, University of Utah, Salt Lake City.

CONFERENCE PRESENTATIONS:

**student co-author*

*Brenner, S., *DelPriore, D. J., *Shakiba, N., *Schlomer, G. L., Hill, S. E., & **Ellis, B. J.** (2018, May) *Paternal behavior quality influences daughters' sociosexuality through lowered expectations for male relationship partners*. Poster presented at the 30th Annual Meeting of the Association for Psychological Science (APS), San Francisco, CA.

*Santana, M., & **Ellis, B.J.**, (2018, April). *An adaptation-based approach to the impact of childhood adversity on cognitive abilities*. Poster presented at University of Utah Undergraduate Research Symposium. Salt Lake City, UT.

Ellis, B. J., *DelPriore, D. J., & *Schlomer, G. L. (2017, June). Fathering quality predicts differences in parental monitoring and affiliation with sexually risky peers among daughters within-families. Paper presented at the 29th Annual Meeting of the Human Behavior & Evolution Society (HBES), Boise, ID.

*DelPriore, D. J., Proffitt Leyva, R. P., Hill, S. E., & **Ellis, B. J.** (2017, June). Low paternal investment, perceptions of male sexual interest, and women's sociosexuality: Testing for mediation. Paper presented at the 29th Annual Meeting of the Human Behavior & Evolution Society (HBES), Boise, ID.

*DelPriore, D. J., *Shakiba, N., *Schlomer, G. L., Hill, S. E., & **Ellis, B. J.** (2017, April). Like father, like partner: Fathering quality calibrates daughters' expectations for male relationship investment in adulthood. Paper presented at the 87th Annual Convention of the Rocky Mountain Psychological Association (RMPA), Salt Lake City, UT.

Henderson, M.G., Short, T.M., *DelPriore, D.J., Proffitt Leyva, R.P., **Ellis, B.J.**, & Hill, S.E. (April 2017) The Effects of Paternal Disengagement on Women's Perceptions of Male Mating Intent. Texas Christian University, Student Research Symposium (SRS), Fort Worth, TX.

*Shakiba, N., **Ellis, B. J.**, Bush, N. R., & Boyce, T. W. (2017, April). Adaptive patterns of stress responsivity. Poster presented at the biennial meeting of the Society for Research in Child Development; Austin, TX.

Ellis, B.J., Oldehinkel, A.J., & Nederhof, E. (April 2017). The Adaptive Calibration Model of stress responsivity: An empirical test in the TRAILS study. Paper presented at biennial meeting of the Society for Research in Child Development, Austin, TX.

Ellis, B.J., *Bianchi, J., Griskevicius, V., & Frankenhuys, W.E. (March 2017). Beyond risk and protective factors: An adaptation-based approach to resilience. Paper presented at the biennial meeting of the International Conference of Psychological Science, Vienna, Austria.

*DelPriore, D. J., Proffitt Leyva, R. P., **Ellis, B. J.**, & Hill, S. E. (2017, January). Looking for love in all the right places? Father disengagement increases women's perceptions of male mating interest. Talk presented at the 18th Annual Meeting of the Society for Personality and Social Psychology (SPSP), San Antonio, TX.

TEACHING:

As part of my teaching commitment to CFAHR, I taught the following interdisciplinary graduate course in Spring 2017 and Spring 2018. It was taken by graduate students in Psychology, Anthropology, Biology, Family and Consumer Studies, and Public Health.

2017- 2018	PSYCH/FCS/ANTH/SOC 6465: Biosocial Mechanisms of Stress, Development and Health (Consortium for Families and Health Research, University of Utah).
---------------	--

SERVICE:

I have served on the C-FAHR Executive Committee for the last two academic years (2016-2018) and serve on the thesis or doctoral committees of multiple students involved in CFAHR-related research.

C-FAHR Annual Report

Daniel Adkins**June 15, 2018**

During the 2017-2018 period, I have initiated new C-FAHR collaborations, as well as guiding existing projects, initiated since my July 2016 arrival, to successful conclusion. This has included serving as the primary methodologist and data analyst (co-I) on two successful NIH/NICHD R01 submissions. While to lion's share of credit for these grants belongs to the PI's, Jessica Sanders (Utah Ob-Gyn, CFAHR) and Bethany Everett (Utah Sociology), the methodological sections and pilot analyses were well-received in both. I will be leading the analytical aspects of these projects for the period of 2017-2021, but still have >50% effort available for additional externally funded research, which I continue to aggressively pursue. The most promising of the grant proposals I have in development is a highly CFAHR-relevant R01 regarding the epigenetic underpinnings of ethnic birth disparities (R01MD013315). This project received a competitive first-submission score (30%), and I plan to resubmit it as the sole PI in 10/2018. My CFAHR publication record in the period is distinguished by the number of CFAHR (and University) collaborators, including Betty Lin, Patricia Kerig, Elisabeth Conradt, Sheila Crowell, Lee Raby, Lisa Diamond, and Bruce Ellis. These CFAHR collaborations resulted in three high impact psychology publications in *Development and Psychopathology* (2 papers) and *Psychological Assessment*. Additionally, I have one CFAHR collaborative paper in revision at *Women's Health Issues*, which received positive first submission reviews, and another under review at *Plos One* that I am co-first author on. Both of these in-review manuscripts are public health family planning studies. Further, I have three CFAHR collaborative papers in the final stages of drafting that will go out for review this summer, two of which are led by graduate trainee first authors (with me serving as senior author), and one of which I am first author on. I also made a substantial teaching contribution to CFAHR in the period, serving as co-Instructor for the new graduate course, "Families and Health Research Practicum". By all accounts this was a successful endeavor and has yielded a collaborative, completely CFAHR-authored manuscript now in the final drafting stage. Finally, I have served as a CFAHR statistical consultant over the period, and in this role have helped numerous CFAHR-affiliated faculty, postdocs, and graduate students actualize their statistical goals, facilitating academic publication, external grant preparation, and the completion of theses and dissertations.

TEACHING

Faculty Co-Instructor (with *Cynthia Berg* and *Rebecca Utz*), University of Utah, "Families and Health Research Practicum" as part of the C-FAHR Fellows program.

CONSULTING

I have served as CFAHR statistical consultant over the 2017-2018 period, and in this role helped numerous CFAHR-affiliated faculty, postdocs, and graduate students actualize their statistical goals, facilitating academic publication, external grant preparation, and the completion of theses and dissertations.

FUNDED RESEARCH

1R01HD095661. NIH/NICHD. (2017-2021). Jenny Higgins (PI), Daniel Adkins (co-I). "*Sexual acceptability's role in contraceptive preference and behavior*." Collaboration with School of Medicine faculty David Turok and Jessica Sanders. I am the principal statistician and data analyst on the project.

R01HD091405 (provisional). NIH/NICHD. (2018-2021). Bethany G. Everett (PI), Daniel Adkins (co-I). “*Sexual Orientation Disparities in Maternal, Infant, and Child Health.*” Collaboration with Utah Sociology faculty, Bethany Everett, as well as distinguished faculty in Utah Psychology (Lisa Diamond) and Utah Ob-Gyn faculty Turok and Sanders.

SUBMITTED RESEARCH PROPOSALS

R01MD013315. NIH/NIMHD. Submitted 11/2017; Scored 30% 4/2018. Daniel E. Adkins (MPI) and Elisabeth Conradt (MPI). “*Epigenetic mechanisms underlying ethnic disparities in birth outcomes.*” Collaboration with Utah Psychology faculty Elisabeth Conradt (MPI) and Sheila Crowell, Utah Geography faculty Dennis Wei, and Utah Psychiatry faculty Andrey Shabalin. I plan to resubmit in 10/2018.

U54HD096950. NIH/NICHD. Submitted 1/2018; Unscored 4/2018. David Turok (Center PI), Jessica Sanders (Project PI); Daniel Adkins (co-I). “*Male Agents for Reversible Contraceptives (MARC) U54 Center*”. Proposed extension of currently funded collaboration with Utah Ob-Gyn faculty Turok and Sanders.

PUBLICATIONS

Betty Lin[‡], Patricia K. Kerig, **Daniel E. Adkins**. (2018). “Cross-Validation of the Inventory of Callous-Unemotional Traits across Genders and Reporters in a Sample of Detained Youth.” *Psychological Assessment*, (In press).

Elisabeth Conradt, **Daniel E. Adkins**, Sheila Crowell, Catherine Monk, Michael Kobor. (2018). “An epigenetic pathway approach to investigating associations between prenatal exposure to maternal mood disorder and newborn neurobehavior.” *Development and Psychopathology*, (In press).

Elisabeth Conradt, **Daniel E. Adkins**, Sheila Crowell, Lee Raby, Lisa Diamond, Bruce Ellis. (2018). “Incorporating epigenetic mechanisms to advance prenatal programming theories.” *Development and Psychopathology*, (In press).

MANUSCRIPTS UNDER REVIEW

Jessica N. Sanders, Jenny A. Higgins, **Daniel E. Adkins**, G. Stoddard, David K. Turok, Lori Gawron. “The Impact of Sexual Acceptability on IUD and Implant Continuation at One Year.” Revise and resubmit at *Women’s Health Issues*.

Jessica N. Sanders^{*}, **Daniel E. Adkins**^{*}, Simranvir Kaur; Kathryn Stork; Gawron, LM, Turok, DK. “Bleeding, Cramping, and Satisfaction Among New Copper IUD Users: A Prospective Study.” Under review at *Plos One*.

MANUSCRIPTS IN PROGRESS

Daniel E. Adkins, Lisa Diamond, Jenna Alley, Claudia Geist, Bethany Everett. “Childhood adversity and longitudinal patterns of sexual attraction across adolescence and young adulthood.” To be submitted 7/2018 to *Social Forces*.

Melanie D Beagley[‡], Akiko Kamimura, Gladies Orombi, **Daniel E Adkins**. “Trauma and depressive symptoms among war-affected women in post-conflict Uganda.” To be submitted 8/2018 to the *International Journal of Social Psychiatry*.

Notes: [‡] Trainee first author. CFAHR members are *italicized*. ^{*} Co-first authorship.

For a full description of my academic productivity over this period, see CV:

<https://faculty.utah.edu/bytes/curriculumVitae.html?id=u6006921>.

In the past year, Dr. Deboeck's contributions to Families and Health Research falls into three primary categories: 1) Consulting, 2) Research, and 3) Teaching.

CONSULTING

As part of his C-FAHR position, Dr. Deboeck provides statistical consulting to C-FAHR affiliates. This year, he provided 54.5 statistical consulting hours to departments both on the main campus and the medical campus, including: College of Nursing, Communication Sciences & Disorders, Dermatology, Family and Consumer Studies, Health-Kinesiology-Recreation, Political Science, Psychology, Rehabilitation Sciences, and Sociology. A priority this year in Dr. Deboeck's consulting has been providing support for grant applications; one NIH grant with Dr. Yelena Wu (Dermatology) examining a melanoma prevention intervention was submitted, and NSF and NIH grants with Dr. Camilla Hodge (Health-Kinesiology-Recreation) on the impacts of family work-life on adolescent mental health are in preparation. An additional 24.3 consulting hours were provided to support the C-FAHR fellows course (SBS 6220, Families & Health: An Interdisciplinary Research Practicum), a course which helps lay a foundation for a future C-FAHR training grant application.

RESEARCH

In addition to providing consulting hours, Dr. Deboeck has developed a research collaboration with C-FAHR members Dr. Jonathan Butner and Dr. Brian Baucom; this research collaboration has produced two NIH grant submissions and 1 Department of Defense grant submission on Dynamical Systems Approaches to modeling Eating Disorders.

TEACHING

Dr. Deboeck taught two graduate-level statistics courses that have included students from both the main and medical campuses. His "Analysis of Temporal Data" class (Fall 2017, PSY 6556) included students from Rehabilitation Science, Educational Psychology, and Biomedical Informatics in addition to students from his home department of Psychology. His Quantitative Methods II class (Spring 2018, PSY 6510) included students from Business Administration (4x), Rehabilitation Science, Medicine - Clinical Investigation, and Medicine - Neuroscience in addition to students from his home department of Psychology.

All C-FAHR Research Fund Awards + Accomplishments

2015-2018

2015 Travel Award		
Karol Kumpfer <i>Health Promotion</i>	Travel award to meet with colleagues and program officers at an invited workshop	National Institute on Drug Abuse (NIDA) SBIR Phase 1 Grant #: 1R43DA046238-01. 04/01/2018 to 03/31/2019 \$150,000 to PI Kumpfer <i>Strengthening Families: Online Web Version for Teens</i>

2015 Student Awards		
Jennifer Tabler Mentor: R. Utz <i>Sociology</i>	Influence of adolescent eating disorders on marriage, fertility, and health trajectories in adulthood	<p>Project completed; Presented poster at 2016 C-FAHR Spring Symposium</p> <ul style="list-style-type: none"> Received NSF Dissertation Improvement Grant (\$9,602) Graduated with PhD in Sociology, Spring 2016 Started tenure track job at U Texas RGV, Fall 2016. Started tenure track job at University of Wyoming, Fall 2018 3 complete publications+1 under review <ul style="list-style-type: none"> Tabler, Jennifer, Claudia Geist. 2017. "Young women with eating disorders or disordered eating behaviors: Delinquency, risky sexual behaviors, and number of children in early adulthood." <i>Socius: Sociological Research for a Dynamic World</i> 2(1-14). doi:10.1177/2378023116648706 Tabler, Jennifer, Rebecca L. Utz, Ken R. Smith, Heidi H. Hanson, Claudia Geist. 2018. "Variation in reproductive outcomes of women with histories of anorexia nervosa, bulimia nervosa, or eating disorder not otherwise specified by eating disorder type relative to the general population and closest-aged sisters." <i>International Journal of Eating Disorders</i>. 51(2):102-111. Tabler, Jennifer, Rebecca L Utz, Rachel M Schmitz, Claudia Geist, Ken R Smith 2018.. "How methodological approach shapes inferences made about the health of women: The case of eating disorders and fertility" (<i>Journal of Women's Health</i>-accepted). Jennifer Tabler, Claudia Geist, Rachel M Schmitz, Jason M. Nagata. "Does it Get Better? Change in Depressive Symptoms from Late-Adolescence to Early-Adulthood, Disordered Eating Behaviors, and Sexual Identity." (Under review). 3 conference presentations <ul style="list-style-type: none"> Jennifer Tabler. "Fertility of Young Women with Eating Disorders: A Comparison of Clinical and Non-clinical Measures." <i>American Sociological Association Annual Meeting</i>, August 2017 in Montreal, Canada Jennifer Tabler. "The Influence of Eating Disorder Type on Fertility Trajectories: A Discordant-Sibling Analysis." <i>Population Association of America Annual Meeting</i>. April 2017 in Chicago, IL Tabler, Jennifer. "Young Adult Women with Eating Disorders: Delinquency, Risky Sexual Behavior, and Fertility in Early Adulthood." <i>ADD Health Users Conference</i>, June 2016 in Bethesda, MD

Alla Chernenko Mentor: A. Kamimura <i>Sociology</i>	Migration Experience & Health Lifestyles Transformation: The Case of Russian Speaking Immigrants	Project is in progress; no presentation to C-FAHR yet Accomplishments, as of 04/2018 <ul style="list-style-type: none"> Data collected and prepared for analysis; Manuscript to be submitted for publication (target date May 2018).
Alexander Crenshaw Mentor: B. Baucom <i>Psychology</i>	Effects of Stress on Empathic Accuracy Among Romantic Couples	Project in progress; Poster at 2017 C-FAHR Symposium Accomplishments, as of 03/2018 <ul style="list-style-type: none"> Data collection completed 08/2016 Presentation at Association for Psychological Science, May '17 Manuscript under review

2016 Interdisciplinary Pilot Grant Awards		
Elisabeth Conratt S. Crowell, B. Silver, J. Carpenter, D. Nix, H. Coon <i>Psychology, OB/GYN, Bioinformatics, Epi Genetics</i>	Maternal Depression: Epigenetic pathways to child problem behavior - &-- Intergenerational transmission of emotional dysregulation	Project in progress; presentation at 2017 C-FAHR symposium Accomplishments, as of 04/2018 <ul style="list-style-type: none"> 1 manuscript submitted; waiting for review 1 manuscript (review) published 3 conference abstracts accepted 1 grant funded, R21MH10977701A1 (\$210,832) Pilot data used for an R01 submission which took place in Nov17 along with Daniel Adkins; 30th percentile Another R01 submission will take place in 6/2018 3/4 of sample recruited; expect to finish recruitment in 8/2018
Paul LaStayo R. Marcus, J. Fritz, K. Baucom <i>Physical Therapy, Psychology</i>	Incorporating a patient-partner dyad in a healthy lifestyle program following total knee arthroplasty	Project completed; presentation at 2017 C-FAHR Spring Symposium <ul style="list-style-type: none"> No manuscripts or grant submissions to date (due to low sample size and significant challenges with recruitment and retention) Recruitment complete, with a lot of delay and challenge. Retention of couples over 12 months was also very challenging.
Heidi Hanson J. Vanderslice Dept Fam & Prev Medicine	The air of heirs: shared environment, shared genetics, and the health effects of air quality	Project in progress; presented at a 2017 C-FAHR symposium Accomplishments, as of 06/2018 <ul style="list-style-type: none"> Podium presentation at the Program for Air Quality, Health, and Society retreat (9/21/2016) St. Baldricks foundation award (single year – co-investigator; work from the CFHAR award was an essential component in the application)

		<ul style="list-style-type: none"> • One manuscript complete and to be submitted by 8/15/2018 • One manuscript being revised – expect to resubmit 07/15/2018 • One manuscript being revised – expect to resubmit 6/15/2018 • Pilot data is being used for another manuscript that is nearly complete and should be submitted by 10/1/2018 • Submitted R21 application with Anne Kirchhoff as the PI and Jim and I as co-investigators. Not funded. Resubmission in 3/2017. • Second R21 resubmitted and still unfunded. • We have an R01 under review that uses the prelim results generated with the CFHAR funds. Anne Kirchhoff is the PI and I am a co-I.
<p>Alex Terrill</p> <p>B. Cardell, J. MacKenzie, M. Reblin, L. Richards</p> <p><i>OT, Physical Medicine Rehabilitation, Nursing</i></p>	<p>Promoting resilience after stroke in the survivor/caregiver dyad (ReStoreD): Developing an intervention for post-stroke depressive symptoms</p>	<p>Project completed; presented at 2016 C-FAHR symposium</p> <p>Accomplishments as of June 5th, 2018:</p> <ul style="list-style-type: none"> • 10 grant applications submitted based on feasibility data: <ul style="list-style-type: none"> ○ Craig H. Neilsen Fund (\$198,556) - funded ○ R03HD091432 to NICHD/NCMRR (\$99,643) -funded ○ NIH LRP (\$68,000) - funded ○ Utah StrokeNet Research Training and Career Development Program (role: trainee) (\$50,000) - funded ○ AHA's Mentored Clinical and Population Research award (\$77,000) - not funded ○ U College of Health Pilot (\$8509) - not funded ○ Skaggs Foundation for Research (\$38,938) - funded ○ C-FAHR Pilot (\$10,000) - funded ○ RWJF IRL (\$34,6718) - pending ○ NIH LRP-renewal (\$68,000) - pending • 10 conference presentations: <ul style="list-style-type: none"> ○ Terrill, A. L., Reblin, M., MacKenzie, J. J., Einerson, J., Cardell, E., Berg, C., Majersik, J., & Richards, L. (2016). Promoting resilience after stroke in dyads (ReStoreD) through a positive psychology intervention. Presented at the annual Rehabilitation Psychology conference in Atlanta, GA ○ Terrill, A. L., Reblin, M., Mackenzie, J. J., Einerson, J., Cardell, E., Berg, C., Majersik, J., & Richards, L. (2016). Promoting resilience in couples after stroke: Feasibility testing of a dyadic positive psychology-based intervention. Poster presented at the annual American Congress of Rehabilitation Medicine in Chicago, IL. ○ Einerson, J., Cardell, E., & Terrill, A. L. (2016). "Things are different around here": Activity participation and role changes for survivors and caregivers post-stroke." Poster presented at the annual American Congress of Rehabilitation Medicine in Chicago, IL. ○ Terrill, A. L., Reblin, M., Mackenzie, J. J., Cardell, E., Berg, C., Majersik, J., & Richards, L. (2017). A novel couples-based intervention for stroke survivors and partner caregivers improves mood and quality of life. Presented at the International Stroke Conference in Houston, TX. ○ Terrill, A. L. (2017). <i>From surviving to thriving: Promoting resilience after stroke</i>. Invited speaker at the Oregon Stroke Network's 11th Annual Oregon Stroke Conference. ○ Terrill, A. L., Reblin, M., Mackenzie, J. J., Cardell, E., Berg, C., Majersik, J., & Richards, L. (2017). A couples-based intervention improves depressive symptoms in stroke survivors and care-partners.

		<p>Presented at the annual American Congress of Rehabilitation Medicine in Atlanta, GA.</p> <ul style="list-style-type: none"> ○ Terrill, A. L., Cardell, B., Einerson, J., Mackenzie, J. J., Majersik, J., & Richards, L. (2018). <i>A couples-based positive psychology intervention improves depressive symptoms, participation, and quality of life after stroke</i>. Presented at the American Occupational Therapy Association annual conference in Salt Lake City, UT. ○ Einerson, J., Cardell, B., Richards, L., & Terrill, A. L. (2018). <i>Occupational loss and perceived burden: Addressing care-partner needs post-stroke</i>. Presented at the American Occupational Therapy Association annual conference in Salt Lake City, UT. ○ Terrill, A. L., MacKenzie, J. J., Cardell, E., Berg, C., Majersik, J., & Richards, L. (2018). Pilot testing a dyadic positive psychology intervention for couples coping with stroke. Oral presentation at the annual Rehabilitation Psychology conference in Dallas, TX. ○ Terrill, A. L., Einerson, J., Reblin, M., MacKenzie, J., Cardell, B., Berg, C., Majersik, J., Richards, L. (2018). Pilot testing a positive psychology intervention to promote well-being in couples coping with stroke. Abstract accepted for presentation at the 12th International Society of Physical and Rehabilitation Medicine World Congress in Paris, France. • 1 manuscript: <ul style="list-style-type: none"> ○ Terrill, A. L., Reblin, M., MacKenzie, J. J., Cardell, B., Einerson, J., Berg, C. A., . . . Richards, L. (2018). Development of a novel positive psychology-based intervention for couples post-stroke. <i>Rehabilitation Psychology</i>, 63(1), 43-54. doi:10.1037/rep0000181
<p>Megan Reynolds</p> <p>N. Waitzman</p> <p><i>Sociology, Economics</i></p>	<p>Does family caretaking inflate the gender and immigrant health gaps?</p>	<p>Presented at 2016 C-FAHR symposium</p> <p>Accomplishments, as of 01/2018</p> <ul style="list-style-type: none"> • Manuscript under review at Journal of Immigrant and Minority Health ("Non-Cancer Screening Disparities among Immigrants from Seven World Regions"); Submitted for consideration at ASA 2018 meeting • Second manuscript under review at Journal of Immigrant and Minority Health ("Health Screening Barriers across Immigrant Groups") • Third manuscript in progress ("Cancer Screening Rates among Immigrant Women from across the Globe") • Pilot grant submitted to University of Colorado Boulder's Population Center for money to assist with preparation of R21 (target date: October 2018)
<p>Katie Baucom</p> <p>B. Baucom, T. Smith, K. Fortenberry, P. Williams</p> <p><i>Psychology, Fam & Prev Med</i></p>	<p>Couple therapy as an adjunct to medical treatment in relationally distressed individuals with metabolic syndrome and their partners</p>	<p>Project in progress; Presented at 2017 C-FAHR symposium</p> <p>Accomplishments, as of 04/2018</p> <ul style="list-style-type: none"> • Enrollment closed; 90% of target sample was recruited • Received Funding Incentive Seed Grant from VP for Research (\$24,805 for 01/2016-06/2017) • Submitted NIH LRP in 2016 (not funded) and 2017 (pending) • Submitted K23 to NIDDK; pending funding in fall 2018

<p>Kim Kaphingst</p> <p>H. Canary, M. Clayton, M. Champine, M. Sukovich</p> <p><i>Communication HCI, Nursing, Genetic Counseling</i></p>	<p>Exploring family health history: Cross Cultural Investigation</p>	<p>Project Completed; presented at 2016 C-FAHR symposium</p> <p>Accomplishments, as of 03/2018</p> <ul style="list-style-type: none"> • All recruitment completed Spring 2016 • Initial coding and analysis completed Summer 2016 • 5 conference presentations <ul style="list-style-type: none"> ○ National Society of Genetic Counselors October 2016 ○ D.C. Health Communication conference April 2017 ○ National Communication Association Nov 2017 ○ Western States Communication Association Feb 2018 (top paper) ○ International Conference on Communication in Healthcare October 2017 • Invited Presentation <ul style="list-style-type: none"> ○ Elrick, A. (2018, June). Knowledge of family health history: Cross cultural comparison of interfamilial communication. Invited speaker for the National Family Health History Group at the National Human Genome Research Institute (NHGRI). • 2 manuscripts under review <ul style="list-style-type: none"> ○ Pokharel, M., Elrick, A., Canary, H., Clayton, M., Champine, M., Sukovic, M. & Kaphingst, K. Individual roles in family communication about health across cultures: A qualitative investigation. ○ Canary, H., Elrick, A., Pokharel, M., Clayton, M., & Kaphingst, K. Family health history tools as communication resources: Perspectives from Caucasian, Hispanic, and Pacific Islander families. • 2 manuscripts in process <ul style="list-style-type: none"> ○ Elrick, A., Pokharel, M., Canary, H., Clayton, M., Sukovic, M., Champine, M., & Kaphingst, K. (In progress). "It all gets out somehow": Intentional sharing and concerns for family communication of health across cultures ○ Elrick, A., Pokharel, M., Canary, H., Clayton, M., Sukovic, M., Champine, M., & Kaphingst, K. (Under Review). Knowledge of family health history: Comparison of diverse family communication of familial disease history • R21 submitted (not funded); planning to revise • U01 submitted to NCI in January 2018, received impact score of 18
<p>Neng Wan</p> <p>L. Edelman, K. Dassel, G. Tosly, M. Reblin, T. Queen. A. Terrill</p> <p><i>Geography, Nursing, Psychology, OT</i></p>	<p>Interactions between life-space and quality of life in spousal dyads coping with chronic conditions</p>	<p>Project in progress; presented at 2017 C-FAHR Spring Symposium</p> <p>Accomplishments, as of 04/2018</p> <ul style="list-style-type: none"> • Finished first component of study (i.e., indoor positioning system) • The second component of the study (i.e., participants recruitment) is currently in progress; We have been facing recruitment challenges since 2016; In addition, recruitment is further delayed by the very tight schedule of the Co-PI of the project • 2 conference presentations: Gerontological Society of America 2016 & University of Utah Center on Aging retreat 2016;

		<ul style="list-style-type: none"> • Another conference presentation in progress: Gerontological Society of America 2018 • 3 grant proposal submitted (two not funded; one funded by the American Cancer Society Institutional Grant (via HCI)); Preliminary results used for landing a NIH R01 grant; Another R01 proposal to be submitted in June 2018
--	--	--

2016 Student Awards

Ashley Elrick Mentor: K. Kaphingst <i>Communication</i>	Examining Health Topic Avoidance Within Families to Inform Intervention Development	Project Completed;; poster at 2017 C-FAHR Symposium <ul style="list-style-type: none"> • Presentation at D.C. Health Communication (DCHC) conference • Manuscript in progress
Chelsea Gourley, Ashley Donham Mentor: M. Diener <i>Human Development & Social Policy</i>	Child Life's Role in Managing the Stress of Pediatric Diabetes	Project is in progress; poster at 2017 C-FAHR Spring Symposium Accomplishments, as of 03/2018 <ul style="list-style-type: none"> • Data collection complete • Data analyses complete • Thesis completed May 2018 • Manuscript in progress
Robert Kent de Grey Mentor: B. Uchino <i>Psychology</i>	Friends in High-Tech Places: Development and Validation of the Online Social Support Measure	Project in progress; no C-FAHR presentation yet Accomplishments, as of 03/2018 <ul style="list-style-type: none"> • Data collection for Study I (measure development) complete • Data collection for Study II (ambulatory blood pressure validation) complete • In analysis
Djin Lai Mentor: L. Ellington <i>Nursing</i>	A Feasibility Study: Dyadic Coping and Concordance of End of Life Decisions in Home Health Patients and their Family Caregivers	Project completed; presented poster at 2017 C-FAHR Spring Symposium Accomplishments <ul style="list-style-type: none"> • Podium session presented <ul style="list-style-type: none"> ◦ Lai, D., Ellington, L., Towsley, G. L., & Berg, C. (2017, April). Expressing the unspoken: Families communicating openly about End of Life. Podium session presented at the Western Institute of Nursing's 50th Annual Communicating Nursing Research Conference: Denver, CO. • Grant submitted (12/1) to WIN/STTI, \$10,000 (not funded) • Proposal (2/20) submitted for University of Utah graduate research fellowship , \$18,000, awarded • Instruments were tested which informed the final selection of instruments for dissertation • Manuscript in progress.

Brendan Ostlund Mentor: L. Conradt & T. Drew <i>Psychology</i>	Brains in Bloom (BiB) Study	Project completed; no presentation at C-FAHR yet <ul style="list-style-type: none"> • Publication under review based of feasibility data from this study • Presentation at Society for Research on Child Development, Apr17 • Submitted NRSA in December, 2016 using these pilot data
Corinna Trujillo Tanner Mentor: M. Caserta <i>Nursing</i>	Posttraumatic Growth among Older Adults with Vision Loss Caused by Age Related Macular Degeneration	Project in progress; presentation at 2017 C-FAHR Spring Symposium <ul style="list-style-type: none"> • Received IRB approval • Phase 1 & 2 interviews completed • Manuscript: Scoping Review of Literature, in progress • Manuscript: Accommodating research participants with blindness and low vision- in progress
Rumei Yang Mentor: L. Edelman <i>Nursing</i>	Fear of Falling in Older Adults and Corresponding Fears in Family Caregivers: Dyads Coping with Fall Risks	Project in process; no presentation at C-FAHR event yet <ul style="list-style-type: none"> • Finished the pilot study and presented results at local Sigma Tau meeting. • IRB approved; • Recruited 5 dyads (so far) and 30 opt letters sent.

2017 Interdisciplinary Pilot Grant Awards

Anne Kirby M. Diener C. Wright <i>Occ Therapy, FCS</i>	The role of parents in preparing youth with autism for adulthood	Project in progress (data collected); no presentation at C-FAHR yet Accomplishments, as of 04/2018 <ul style="list-style-type: none"> • Developed MAPSS intervention materials and trialed the program for feasibility with $n=4$ parent-youth dyads • Collected survey data from $n=255$ caregivers • Presentations describing MAPSS intervention development: <ul style="list-style-type: none"> ○ Kirby, A. V. (2018, Accepted). Development of an Intervention for Parents of Transition-age Youth with ASD. Oral presentation at the <i>7th Occupational Therapy Summit of Scholars</i>. Kansas City, KS: June 8, 2018. ○ Kirby, A. V., Cottle, K. J., Himle, M. B., Diener, M., Wright, C., & Hoffman, J. (2018, Accepted). Maximizing Adolescent Post-Secondary Success: Development and Refinement of a Novel Intervention for Parents of Youth with ASD. Poster presentation at the <i>Annual Meeting of the International Society for Autism Research</i>. Rotterdam, Netherlands: May 12, 2018. • Manuscript analyzing adolescent interviews (from the 4 dyads as well as data collected w/ other funds) <ul style="list-style-type: none"> ○ Kirby, A. V., Schneider, M., Diener, M., & Henderson J. (in press). Who is going to pay for the wi-fi? Exploring adulthood from the perspectives of autistic youth. <i>Autism in Adulthood</i>.
--	--	--

		<ul style="list-style-type: none"> External grant to further test the MAPSS intervention <ul style="list-style-type: none"> Kirby, A. V. [PI], Himle, M., Cottle, K., Diener, M., & Wright, C. (07/2018 - 06/2019). "Pilot Study of the MAPPS (Maximizing Adolescent Post-secondary Success) Intervention for Parents of Youth with ASD." American Occupational Therapy Foundation (AOTF) Intervention Research Grant. 1 year, \$50,000. Awarded.
Brian Baucom L. Ellington M. Reblin P. Georgiou <i>Psychology, Nursing, Moffit Center, Engineering</i>	Mapping the complexity of communication in caregiver systems for advanced cancer patients	Project in progress; no presentation at C-FAHR yet Accomplishments, as of 03/2018 <ul style="list-style-type: none"> Data collection completed Transcription of focus groups completed Qualitative coding of transcripts in progress
Bruce Ellis D. Adkins D. Carlson E. Conratt S. Crowell L. Diamond <i>Psychology Anthropology Sociology Psychiatry FCS Gender Studies</i>	Recruitment of at-risk youth for a series of interdisciplinary studies DASH working group	Project in progress; no presentation at C-FAHR yet Accomplishments, as of 03/2018 <ul style="list-style-type: none"> Obtained IRB approval for research Successfully negotiated access to conduct data collection in the Boys and Girls Clubs of Greater Salt Lake (6 locations) and YouthCity (4 locations). Successfully piloted all procedures and instruments at the data collection sites. Hired a full time Project Coordinator and a team of 6 undergraduate level Research Assistants. Undergone extensive training with research team to conduct assessments with high reliability Have begun full data collection (12 participants as of 03/2018). Grants awarded for this project: James S. McDonnell Foundation (\$150,000 subcontract), Sorenson Legacy Foundation (\$30,000).
Debra Scammon M. Magill C. North <i>Business & Fam & Prev Med</i>	Integrating family caregivers into primary care teams: Best Practices	Project in progress; no presentation at C-FAHR yet Accomplishments, as of 04/2018 <ul style="list-style-type: none"> Received exemption from IRB Named research assistant to conduct field work Interviewed 7 providers; recruitment underway Presentations: at American Society on Aging, "Creating Caregiver Provider Partnerships" (3/18) and University of Utah Health Services Research Conference – "PCORI Researchers' Break Out: Taking Care of our Parents and Creating Caregiver Provider Partnerships" (3/18) Grants Awarded: PCORI Engagement Award – Creating Caregiver Provider Partnerships; 2 years @ \$249,000. Plan to host 4 conferences to work towards creating Provider and Caregiver Guides for Best Practices for inclusion of family caregivers in primary care teams. First conference scheduled May 11, 2018. Two providers interviewed as part of CFAHR project will be presenting.

2017-2018 Training & Student Support Initiatives

C-FAHR Fellows Program	<p>12 pre- and post-doctoral fellows were selected to participate in a team-taught “research practicum” course focused on interdisciplinary team science approaches to the study of “families and health.” Two to three team-authored manuscripts, conceptualized and executed during the course, will be submitted to peer-review journals by end of summer 2018.</p> <p>Zubi Ahmmad (<i>sociology</i>), Jenna Alley (<i>psychology</i>), Jackie Einerson (<i>occupational therapy</i>), Katarina Friberg Felsted (<i>gerontology</i>), Caitlin Kelly (<i>psychology</i>), Lauren Lasrich (Family & Consumer Studies), Eunjin Lee (<i>postdoc, psychology</i>), Ascher Munion (<i>psychology</i>), Mike Newman (<i>public health</i>), Rebecca Owen (<i>sociology</i>), Rumei Yang (<i>nursing</i>), Sarah Wawrzynski (<i>nursing</i>)</p>
-------------------------------	---

2018 C-FAHR Awards for Team Development & Shared Resources

Brian Baucom D. Adkins S. Brewer J. Butner P. Deboeck <i>Psychology,</i> <i>Sociology,</i> <i>Geography</i>	Curriculum Development and Launch of the Advanced Statistical Methods for Family Research Workshop Series	A team of C-FAHR statisticians and methodologists received approval to offer a series of intensive summer workshops through the well-regarded ICPSR summer training program. In summer 2018, the first workshop on “dynamical systems analyses” was held in Salt Lake City. It had 15 participants, with off-campus attendees coming from UCSF, NYU, UMBC, Boston University, Florida State, and Georgia Southern University. By summer 2019, the goal is to offer 3-4 different workshops.
Rebecca Utz <i>Sociology</i>	AddHealth Data Office	Created access to a data resource and established a secure data analysis office for use with the <i>Add Health</i> dataset, waves 1-5. Any C-FAHR member (student or faculty) can access these data after signing a data security pledge and receiving initial training on data security protocols. Current approved users as of Summer 2018: 13 C-FAHR members.

2018 Interdisciplinary Pilot Grant Awards

Mardi Clayton K. Supiano, K. Dassel, G. Towsley, J. Eaton, M. Caserta, R. Utz, <i>Nursing,</i> <i>Gerontology,</i> <i>Sociology</i>	Live Patient Discharge From Hospice: Implications For Families And Hospice Staff	Project in progress; No C-FAHR presentation yet
---	--	---

Gail Towsley A.Terrill <i>Nursing, Occ Therapy</i>	Me & My Wishes: Developing a Family Conversation Component to Enhance Communication about Care Preferences in LTC settings	Project in progress; No C-FAHR presentation yet
Elisabeth Conradt S. Crowell M. Smid K. Buchi C. Fung J. Shakib E. Garland <i>Psychology, Obstetrics and Gynecology, Pediatrics, Social Work</i>	Epigenetic and neurodevelopmental treatment targets for prenatal opioid exposure	Project in progress; No C-FAHR presentation yet Accomplishments, as of 03/2018 <ul style="list-style-type: none"> • IRB approval • Currently collecting pilot data • Anticipate R01 submission in 10/2018 • 1 manuscript under review (review paper on prenatal opioid exposure) • Participating in NIH ECHO working group on prenatal opioid exposure; leading a review + analysis of ECHO metadata; manuscript in preparation
Deanna Kepka A.Kirchoff D. Wetter L. Clark D. Lai <i>Nursing, Pediatrics, Population Health Sciences</i>	Feasibility Assessment for Engaging Rural Providers in a Multi-Level Family-Centered HPV Intervention	Project in progress; No C-FAHR presentation yet
Claudia Geist J. Sanders Sociology, Ob/Gyn	HerStories: Economic Context of Family Planning	Project in progress; No C-FAHR presentation yet
Alex Terrill R. Altizer B. Cardell L. Clark J. Mackenzie <i>Occ Therapy, Population Health Sciences, Nursing, Division of Phs Rehab Med</i>	Piloting a web-based positive psychology intervention for couples coping with brain injury	Project in progress; No C-FAHR presentation yet

2018 Student Awards		
Robert Vlisides-Henry <i>Psychology</i>	Like Mother Like Daughter (or Son): Prenatal Exposure to Maternal Stress and Emotion Dysregulation as Predictors of Newborn Neurobehaviors	Project in progress; No C-FAHR presentation yet
Elizabeth Nagelhout <i>Public Health, DFPM</i>	Assessing Ultraviolet Radiation Exposure in Rural and Urban Utah Families	Project in progress; No C-FAHR presentation yet
Ashley Elrick <i>Communication</i>	Western States Communication Association Conference	Travel award

Announcement & Syllabus for C-FAHR Fellows Program, Spring 2018



Graduate students are invited to apply to be a

C-FAHR Fellow

Up to 10 C-FAHR graduate students will be selected for the 2017-2018 cohort. Fellows will be awarded a \$1000 stipend.

* Fellows will participate in a C-FAHR sponsored mentoring workshop in the fall, attend C-FAHR sponsored events throughout the year, provide feedback to the C-FAHR executive committee about interdisciplinary training interests, and enroll in an interdisciplinary project-based course during Spring 2018 where you will work in small teams to develop original manuscripts, utilizing faculty-owned data and applying innovative statistical techniques. This is an opportunity to work directly with and be mentored by a number of C-FAHR faculty members.

To apply, prepare a one-page memo detailing your research interests and how they would be enhanced by additional training and mentoring in "families & health."

Submit to C-FAHR-info@utah.edu by May 15.

Question? Contact Becky *Rebecca.utz@utah.edu
Cindy *Cynthia.berg@utah.edu

Families & Health:

An Interdisciplinary Research Practicum

SBS 6220

Spring 2018

Tuesdays 9:30-12:30 in 315 BEHS

This course is only open to C-FAHR Fellows. Instructor Permission Required

Course Objectives:

The purpose of this course is to develop an interdisciplinary perspective to the quantitative study of “families and health” by engaging in a collaborative research project. This course will encourage students to (a) analyze critically – and reflect deeply about – the theories and analyses used within and between disciplines studying “families and health”; (b) appreciate the value of diverse perspectives and collaborative approaches to “families & health” research; and (c) imagine and implement a novel research project that is born from an interdisciplinary collaboration. This course is offered through the Consortium for Families and Health Research (C-FAHR).

Expectations:

Students are expected to be actively engaged and consistently participate in the workshops and class sessions associated with this interdisciplinary training program. Students are expected to demonstrate curiosity and creativity, both within their discipline as it applies to the topics being discussed, and outside of their existing expertise and training. Like all graduate-level courses, there is an expectation for work outside of class time. (UU policy is 1 credit hour = 3 hours outside of class time).

Instructors:

Given the interdisciplinary nature of this course, teaching will be done by an interdisciplinary team of instructors, statistical consultants, and guest speakers. The primary teaching team includes:

Cindy Berg

cynthia.berg@psych.utah.edu

801-585-6960

Rebecca Utz

rebecca.utz@utah.edu

801-581-7922

Daniel Adkins

daniel.adkins@soc.utah.edu

801-581-6153

Additional statistical consultation will be provided by:

Pascal Deboeck

pascal@psych.utah.edu

801-585-5904

Office Hours: the course is designed to have significant in-class consultation. If additional consultation is required, please schedule an appointment with one of the teacher(s).

Assessment:

Course letter grades will be assigned based on an assessment of weekly attendance and participation activities, the completion of a collaborative research project, and a final self-evaluation essay.

A = 90-100 points. B = 80-89 points. C = 70-79 points. E = 69 or fewer points.

Attendance & Participation.

- a. **Weekly Attendance & Participation.** Students are expected to attend and be actively engaged in class each week. Attendance is expected at every class meeting during Spring 2018 (n=15), plus at least three of the C-FAHR events and workshops held in the fall (e.g., fellow-only planning sessions). In order to ensure that all students are prepared for class and can be part of the discussion, students are required to submit two discussion questions/topics by 5:00pm on Monday prior to each class meeting. One point per meeting (n=18), with one missed week allowed. *17 points.*
- b. **Team Updates.** Each team will give informal presentations during class detailing the development of their project. These interim reports give each team the opportunity to communicate about their project as it develops, as well as an opportunity to receive feedback from the larger group of students and faculty in the course. We encourage each team to select different team member(s) to present each time. Reports are not expected to be more than a few minutes; no powerpoint required. 2 points for each (2= well-prepared, 1=not well prepared, 0= no presentation from group). *8 points.*

Collaborative Research Project: The primary focus of this course will be to define and complete a collaborative research project related to the topic of “families & health.”

- a. **Annotated Bibliography.** Each student will review literature related to the group’s chosen research topic and create an annotated bibliography summarizing the most salient 5 articles they found that are relevant to their research question and could be used in an introduction to a final paper. The selected articles and summaries will be shared with group members, and it is assumed that students will likely choose readings that they are familiar with or that are from their disciplinary perspective. After sharing the drafts with each other, the team will discuss how to synthesize the literature, perspectives, and theories from multiple fields to enhance the framing of their collaborative project. *15 points*
- b. **Final presentation.** On the final day of class, each team will have the opportunity to present their final project. This should be a formal presentation about 15-20 minutes in length, with 10-15 minutes of discussion. Feedback received during the presentation can be incorporated into the final paper. All team members will receive the same grade. *10 points*
- c. **Final Paper.** The manuscript should follow the author guidelines of a potential target journal, and represent a co-authored or team-based effort. All team members will receive the same grade. *40 points*

Self Evaluation & Reflection. This final 1-page essay is a chance to reflect on how an interdisciplinary approach to research has been helpful to the development of the collaborative project, as well as your own training as a scholar. It is also a chance for you to assess your own effort, participation, and learning in the course. You will grade yourself on this essay. *10 points*

General Overview & Description of Course

The course is comprised of four different types of class sessions. Each meeting on the weekly schedule is color coded to indicate what type of class you can expect

Team Science

These class sessions will allow us to talk about the opportunities and challenges of doing team-based research.

Gathering Information & Planning

These class periods will include a guest lecture and discussion of assigned reading materials. Reading materials will include “classics” and important review articles, as well as examples of recent research manuscripts of some of the most common theories, perspectives, and concepts related to “families & health.” The last half of each class period will be devoted to the development and refinement of the team’s research question and overall project.

Compiling & Analyzing

These class periods will start with a mini lecture/discussion introducing students to different analytic techniques used in the quantitative study of “families & health” (think – encyclopedia entry type of introduction – just enough to provide an exposure to the terminology). Since different teams will have specialized needs based on their specific research question and/or data, the bulk of these class sessions will be spent working with data. Statistical consultants will be available to work with teams on the execution of their analytic aims.

Synthesizing & Writing

During these sessions, we will engage in a discussion of practical topics related to doing interdisciplinary research and writing. The majority of these class periods will be reserved for group work time. Faculty will be available to consult with each team during class time.

Any readings associated with a weekly topic should be completed *prior* to class. To receive attendance/participation points, students must submit at least two questions or topics that they would like to discuss during class to the Canvas discussion board by 5pm on Monday, the day before class.

Weekly Class Schedule

Spring 2018

* All readings are recommended, but those marked with an asterisk should be given highest priority

1/9	<p>What is “Families & Health” Research? How to Be a Team Scientist</p> <p><u>Reading:</u></p> <p>* Utz, R., Berg, C. A., & Butner, J. (2017). It’s a family affair: Reflections about aging and health within a family context. <i>The Gerontologist</i>, Vol 57 (1): 129-135.</p> <p>* Jeong, S., & Choi, J. Y. (2015). Collaborative research for academic knowledge creation: How team characteristics, motivation, and processes influence research impact. <i>Science and Public Policy</i>, 42, 460-473.</p> <p>Van Noorden, R. (2015). Interdisciplinary research by the numbers. <i>Nature</i>, 525, 306-307.</p> <p>Determining and Negotiating Authorship: http://www.apa.org/science/about/psa/2015/06/determining-authorship.aspx</p> <p>Explore resources available at www.teamsciencetoolkit.cancer.gov</p>
1/16	<p>Relationships and Health</p> <p><u>Reading:</u></p> <p>* Uchino, B. N., Bowen, K., Kent, R., Mikel, J., & Fisher, E. B. (2017). Social Support and Physical Health: Models, Mechanisms, and Opportunities. <i>Principles and Concepts of Behavioral Medicine</i>.</p> <p>* Holt-Lunstad, J., Smith, T. B., & Layton, J. B. (2010) Social relationships and mortality risk: A meta-analytic review. <i>PLOS Medicine</i>, 7.</p> <p>Cohen, S. & Wills, T. A. (1985). Stress, social support, and buffering hypothesis. <i>Psych Bulletin</i>, 98, 310-357.</p> <p>*Link & Phelan. (1995). Social conditions as fundamental causes of disease. <i>Journal of Hlth & Social Behavior</i>.</p> <p><u>Lecturer:</u> Bert Uchino, Psychology, Daniel Carlson, Family and Consumer Studies</p>
1/23	<p>The Context and Dynamics of Families Across the Life Course</p> <p><u>Reading:</u></p> <p>*Carr, D., & Springer, K. W., (2010). Advances in families and health research in the 21st century. <i>Journal of Marriage and Family</i>, 72, 743-761.</p> <p>*Cox, M. J., & Paley, B. (2003). Understanding families as systems. <i>Current Directions in Psychological Science</i>, 12, 193-196.</p> <p>Berg, C. A., Sewell, K. K., Hughes, A. E., Wilson, S. J., & Brewer, C. (2016). A developmental perspective to dyadic coping across adulthood. In J. Bookwala (Ed.), <i>Couple Relationships in Mid and Late-Life: Current Perspectives</i>. Washington D.C.: American Psychological Association.</p> <p>*Elder, Glen H. (1989) The Life Course as Developmental Theory. <i>Child Development</i>, 69 (1): 1-12.</p> <p><u>Lecturer:</u> Becky Utz, Sociology & Cindy Berg, Psychology</p> <p>Update #1 What is your research question & plan for the semester? And that dreaded question - So what? (in class)</p>

1/30	<p>The Family and Disease Management</p> <p><u>Reading:</u></p> <p>*Koehly, L. M. (2016). It's interpersonal: Family relationships, genetic risk, caregiving. <i>The Gerontologist</i>, 1-8.</p> <p>*Bakas T, Clark PC, Kelly-Hayes M, King RB, Lutz BJ, Miller EL. Evidence for stroke family caregiver and dyad interventions: a statement for healthcare professionals from the American Heart Association and American Stroke Association. <i>Stroke</i>. 2014;45(9):2836-52.</p> <p>*Berg, C. A., Butner, J., Butler, J. M., King, P. S., Hughes, A. E., & Wiebe, D. J. (2013). Parental persuasive strategies in the face of daily problems in adolescent type 1 diabetes. <i>Health Psychology</i>, 32, 719-728.</p> <p>Laidar-Powell, R., Butow, P., Bu, S., Dear, R., Fisher, A., Coll, J., & Juraskova, I. (2016). Exploring the communication of oncologists, patients and family members in cancer consultations: development and application of a coding system capturing family-relevant behaviours (KINcode). <i>Psycho-Oncology</i>, 25, 787-794.</p> <p><u>Lecturers:</u> Kim Kaphingst, Communication; Alex Terrill, Occ & Rec Therapies, Cindy Berg, Psych</p> <p>Submit Annotated Bibliography to Canvas by 930am</p>
2/6	<p>Data Management Practices; Missing Data</p> <p><u>Reading:</u></p> <p>*Graham, J. W. (2009) "Missing Data Analysis: making it work in the Real World" <i>Annual Review of Psychology</i>, 60: 549-576</p> <p>Schafer, J. L. & Graham, J. W. (2002) "Missing Data: Our View of the State of the Art." <i>Psychological Methods</i>, 7(2): 147-177.</p> <p>2008 JARS (https://www.apa.org/pubs/authors/jars.pdf)</p> <p><u>Lecturers:</u> Daniel Adkins, Sociology</p>
2/13	<p>Update #2 <i>What theories or literatures will you use to frame your study?</i> (in class)</p> <p><u>Guest Mentor:</u> Jim House from University of Michigan.</p> <p>Families Are Not Independent Units</p> <p><i>All C-FAHR members will be invited for this discussion from 11 to 1230</i></p> <p><u>Reading:</u></p> <p>* Boker, S. M. & Laurenceau, J.-P. (2006) Dynamical Systems Modeling: An Application to the Regulation of Intimacy and Disclosure in Marriage. In Models for Intensive Longitudinal Data, T. A. Walls & J. L. Schafer (Eds). Oxford: Oxford University Press, pp. 195–218.</p> <p>* Cook, W. L., & Kenny, D. A. (2005). The Actor-Partner Interdependence Model: A model of bidirectional effects in developmental studies. <i>International Journal of Behavioral Development</i>, 29, 101-109.</p> <p>Deboeck, Nicholson, Kouros, Little, , & Garber, J. (2015). Integrating developmental theory and methodology: Using derivatives to articulate change theories, models, inferences. <i>Applied Developmental Science</i>, 1-15.</p> <p>Perry, N.S., Baucom, K.J.W., Bourne, S., Butner, J., Crenshaw, A.O., Hogan, J.N., Imel, Z., Wilshire, T.J., & Baucom, B.R.W. (2017). Graphic methods for interpreting longitudinal dyadic patterns from Repeated-Measures Actor-Partner Interdependence Models. <i>Journal of Family Psychology</i>, 31, 592.</p> <p><u>Lecturers:</u> Brian Baucom, Psychology</p>

2/20	<p>Early Life Risk and Development</p> <p><u>Reading:</u></p> <p>* Ellis, B., J., & Giudice, M. D. (2014). Beyond allostatic load: Rethinking the role of stress in regulating human development. <i>Development and Psychopathology</i>, 26, 1-20.</p> <p>* Hertzmann, C. (2012). Putting the concept of biological embedding in historical perspective. <i>PNAS</i> 2012 109 (Supplement 2) 17160-17167.</p> <p>* Smith, K.R., Hanson, H.A., 2015. Early Life Influences on Health and Mortality in Adulthood. In: James D. Wright (editor-in-chief), <i>International Encyclopedia of the Social & Behavioral Sciences</i>, 2nd edition, Vol 6. Oxford: Elsevier. pp. 752–758.</p> <p>*Smith, K. R., Mineau, G. P., Garibotti, G., & Kerber (2009). Effects of childhood and middle-adulthood family conditions on later-life mortality: Evidence from the Utah Population Database, 1850-2002. <i>Social Science and Medicine</i>, 68, 1649-1658.</p> <p>Smith KR, Hanson HA, Norton MC, Hollingshaus MS, Mineau GP. Survival of offspring who experience early parental death: Early life conditions and later-life mortality. <i>Social Science & Medicine</i>. 2014 Oct 31;119:180-90.</p> <p><u>Lecturers:</u> Bruce Ellis, Psychology & Ken Smith, Family and Consumer Studies</p>
2/27	<p>Techniques to Measure Change</p> <p><u>Reading:</u></p> <p>*Hertzog, C., & Nesselroade, J. R. (2003). Assessing psychological change in adulthood: an overview of methodological issues. <i>Psychology and aging</i>, 18(4), 639.</p> <p>Willett, J. Singer, J., & Martin, N (1998). "The design and analysis of longitudinal studies of development and psychopathology in context: Statistical models and methodological recommendations." <i>Development and Psychopathology</i>, 10(2), 395-426.</p> <p>*Curran, Patrick J., Obeidat, Khawla, Losardo, Diane. (2010) "Twelve Frequently Asked Questions About Growth Curve Modeling" <i>Journal of Cognition and Development</i>, 11(2): 121-136.</p> <p><u>Lecturers:</u> Pascal Deboeck, Psychology</p> <p>Update #3 What is your team's analytic plan? (in class)</p>
3/6	<p>Techniques to Measure Environment & Context</p> <p><u>Reading:</u></p> <p>*Martin, Gavine, Inchley, Currie. (2017) "Conceptualizing, measuring and evaluating constructs of the adolescent neighbourhood social environment: A systematic review." <i>SSM - Population Health</i>, 3: 335-351.</p> <p>*Ram, N., & Nesselroade, J. R. (2007). Modeling intraindividual and intracontextual change: Rendering developmental context operational. In T. D. Little, J. A. Bouvaird, & N. A. Card (Eds.), <i>Modeling contextual effects in longitudinal studies</i> (pp. 325–342). Mahwah, NJ: Lawrence Erlbaum Associates.</p> <p>Burdette, Amy M.; Needham, Belinda L.. (2012). "Neighborhood Environment and Body Mass Index Trajectories From Adolescence to Adulthood" <i>Journal of Adolescent Health</i>, 50(1): 30-37.</p> <p>Lippert, Adam M. (2016). "Stuck in Unhealthy Places: How Entering, Exiting, and Remaining in Poor and Nonpoor Neighborhoods Is Associated with Obesity during the Transition to Adulthood" <i>Journal of Health and Social Behavior</i>. 57(1): 1-21.</p> <p><u>Lecturers:</u> Daniel Adkins, Sociology and Dennis Wei, Geography</p>

3/13	<p>How many models should I run? How do I know if I am done with analysis?</p> <p><u>Reading:</u></p> <p>*Munafò, Marcus R., Brian A. Nosek, Dorothy V. M. Bishop, et al. (2017) "A manifesto for reproducible science." <i>Nature Human Behaviour</i> 1(0021): 1-9.</p> <p>*Nickerson, R. S. (2000). Null hypothesis significance testing: a review of an old and continuing controversy. <i>Psychological methods</i>, 5(2), 241.</p> <p><u>Lecturers:</u> Pascal Deboeck, Psychology</p> <p>Update #4 Show us some results! (in class)</p>
Spring Break - No Class	
3/27	<p>Writing for an Interdisciplinary Scientific Audience - Journal Selection</p> <p>Writing can be a Team Sport</p>
4/3	<p>No Class.</p> <p>Attend C-FAHR Spring Symposium, April 5 from 4 to 7 in SMBB.</p>
4/10	Communicating Research: Presentations, Posters, & Peer Review
4/17	Revisions - Am I Ever Done With a Paper?!
4/24	<p>Reflections About Team Science</p> <p>Final Presentation (in class)</p> <p>Submit Self-Evaluation Essay by <u>5pm on April 24</u></p>

** Submit **Final Paper** by 5pm on May 1